

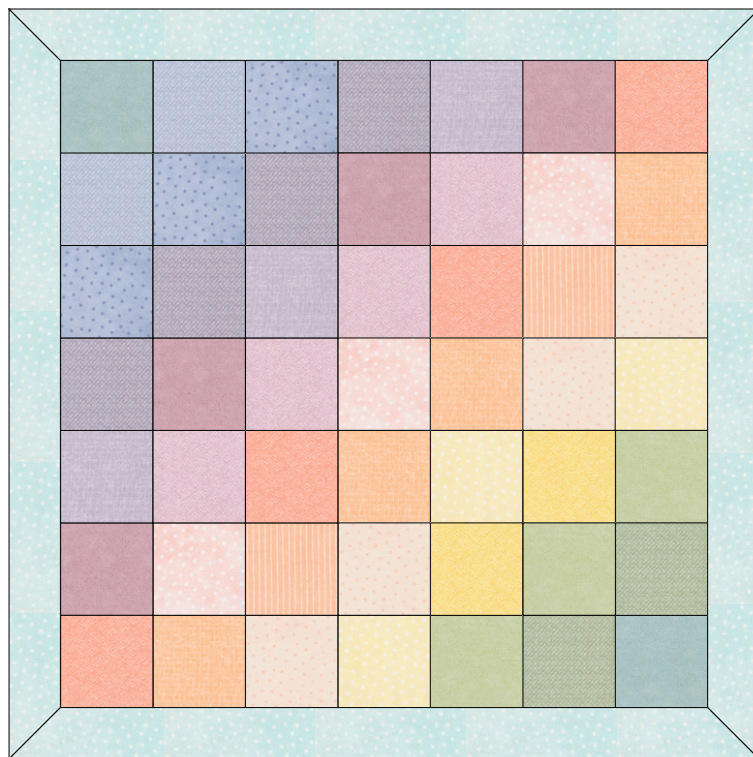
# Self-Binding Patchwork Receiving Blanket

in **LITTLE LAMBIES**

by MAYWOOD STUDIO

**KITS** available at  
ShabbyFabrics.com  
*while supplies last!*

Finishes to 36½" x 36½"



## RECOMMENDED

- Clover Mini Wonder Clips
- FriXion Clicker Pen 0.7mm
- Clover Point 2 Point Turner
- Creative Grids 4½" x 8½" Ruler - #CGR48

## NOTE

All seams are ¼"

*We recommend a shorter stitch length (we used 2.0) for this project.*

## CUT FABRIC

From **various colors**, cut:

- (49) 5" x 5" squares
- OR** (2) packs precut 5" squares for **patchwork**  
*For sample project, we used Little Lambies Woolies Flannel 5" Squares by Bonnie Sullivan for Maywood Studio*

From **backing**, cut:

- (1) 42" x 42" square for **backing**

## PATCHWORK

*For this step, press all seams open.*

Arrange squares as desired in (7) rows of (7) squares each.

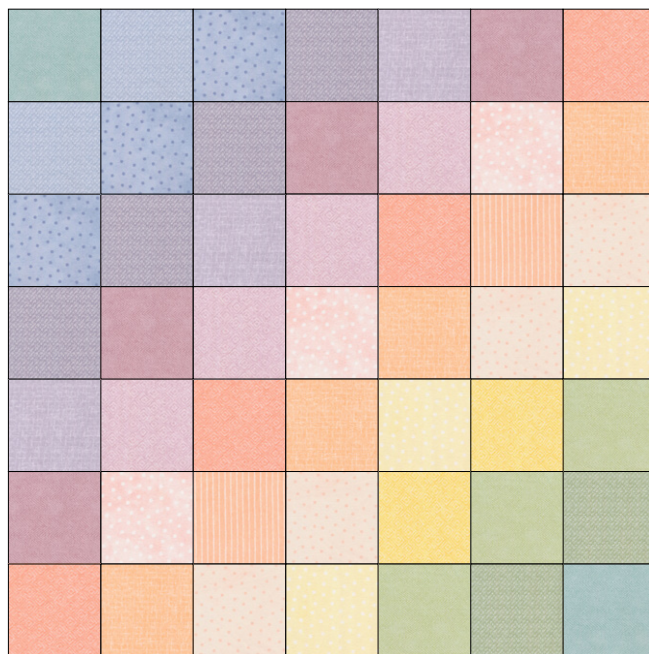
Sew squares together into rows, then sew rows together.

Patchwork unit will measure 32" x 32".

Baste edges by sewing ⅛" around entire patchwork unit.

Follow along with the FREE tutorial  
HOW TO MAKE A  
**SELF-BINDING PATCHWORK  
RECEIVING BLANKET**  
on our YouTube channel:

 [YouTube.com/ShabbyFabrics](https://www.youtube.com/ShabbyFabrics)



## ASSEMBLE BLANKET

Refer to diagram (*right*).

Find centers on all four sides of patchwork unit and mark with Mini Wonder Clips. Using a temporary marking pen, such as a FriXion pen, mark a  $\frac{1}{4}$ " box in each corner (on wrong side of fabric). On one side, mark an  $8\frac{1}{2}$ " opening.

Place **backing** fabric on your working surface, *right side up*. Find centers on all four sides of backing and mark with Mini Wonder Clips.

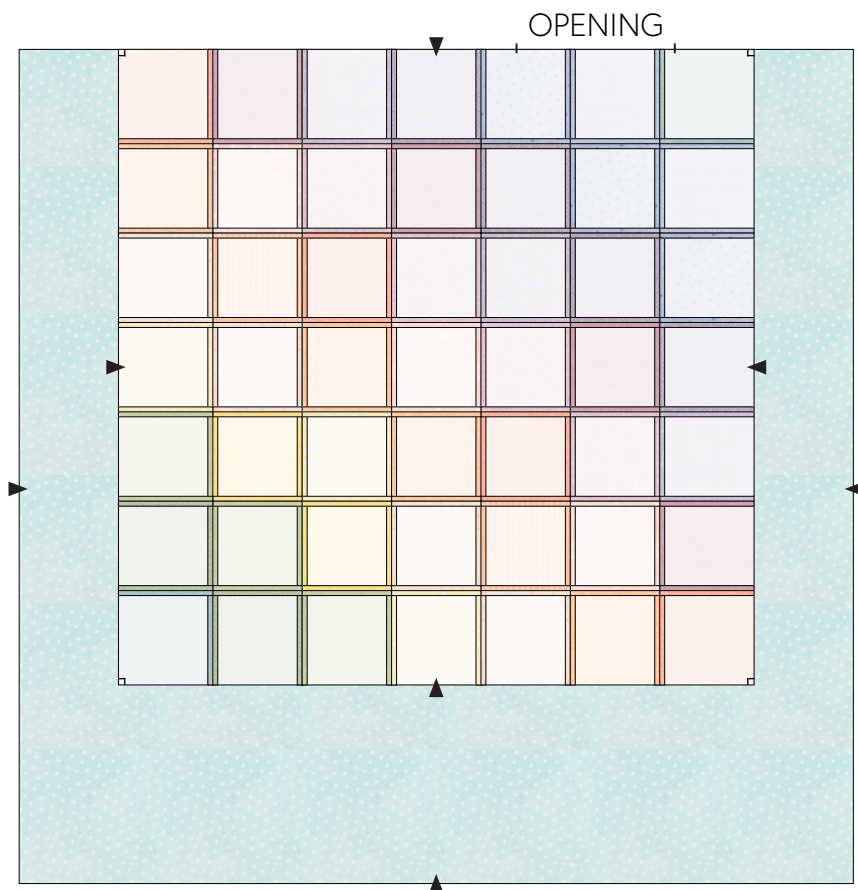
Place patchwork unit, *right side down*, on top of backing, matching centers on one side. Note that the backing fabric will extend beyond patchwork 5" on the sides. Pin patchwork unit to backing along matched side, starting at the center and working toward each end.

Begin stitching at your  $\frac{1}{4}$ " mark, making a small back tack at the beginning. Continue sewing to your next  $\frac{1}{4}$ " mark, making a small backstitch at the end. **IMPORTANT:** Be sure to stop/start around marked  $8\frac{1}{2}$ " opening, and back tack at the beginning and end of opening.

Pull patchwork unit to meet the edge of the backing fabric on the opposite side, matching centers. Pin patchwork unit to backing along matched sides as before. Begin stitching at your  $\frac{1}{4}$ " mark, making a small back tack at beginning and end of seam.

Match centers, and pin to both edges on the remaining sides. Begin stitching at your  $\frac{1}{4}$ " mark, making a small back tack at the beginning and end of your seams.

When you have all four sides sewn, you will have big, floppy puppy ears in the corners. Now let's finish those!



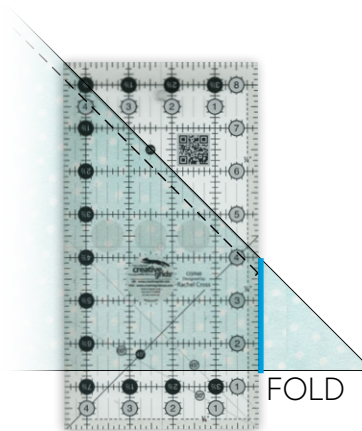
## TRIM CORNERS

Fold two sides together in the corner, matching sewn seams. Align  $45^\circ$  line of ruler with *raw edge* of fabric, and with edge of ruler just touching the end of the seam. Mark your stitching line (*shown in cyan*) with a temporary marking pen, such as a FriXion<sup>®</sup> pen.

Stitch on the line. Before you cut the excess off, check to be sure you are cutting off a triangle, not a square, of fabric.

Trim corner, leaving a  $\frac{1}{4}$ " seam allowance.

Repeat on other three corners.



## FINISH BLANKET

Turn the blanket right side out. We recommend using a Clover Point 2 Point Turner to make nice, sharp points in the corners. Press blanket, coaxing the seam allowance to fold up and away from the center. Pin opening closed. Topstitch opening closed and continue around entire blanket. Quilt as desired.