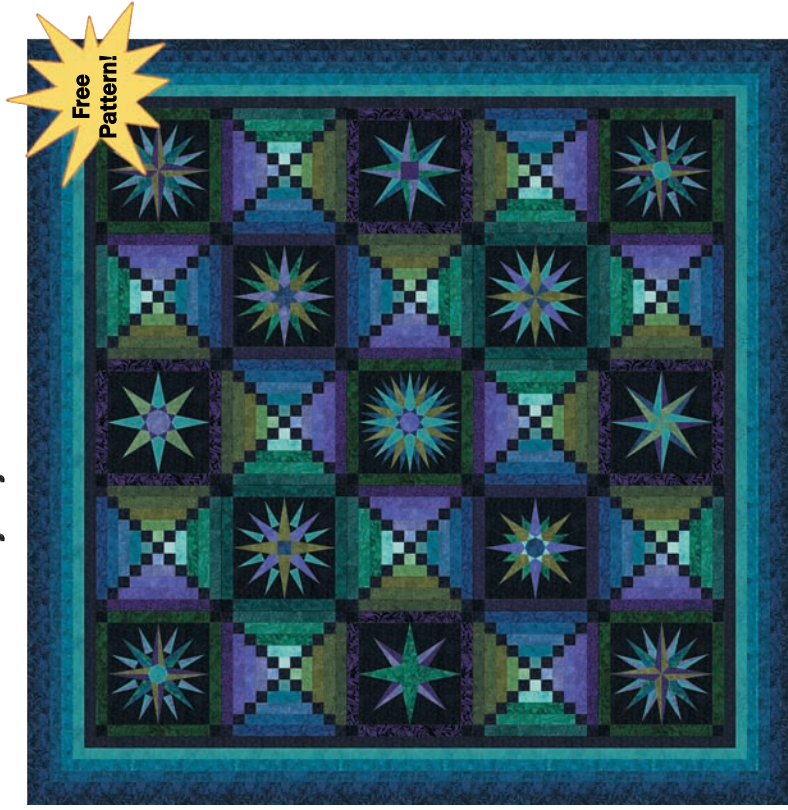


Jinny Beyer's Moon Glow



Created as a block-of-the-month project, this pattern features multiple construction techniques and detailed instructions.

Download free at rjfabrics.com or jinnybeyer.com

Spectrum Project Requirements

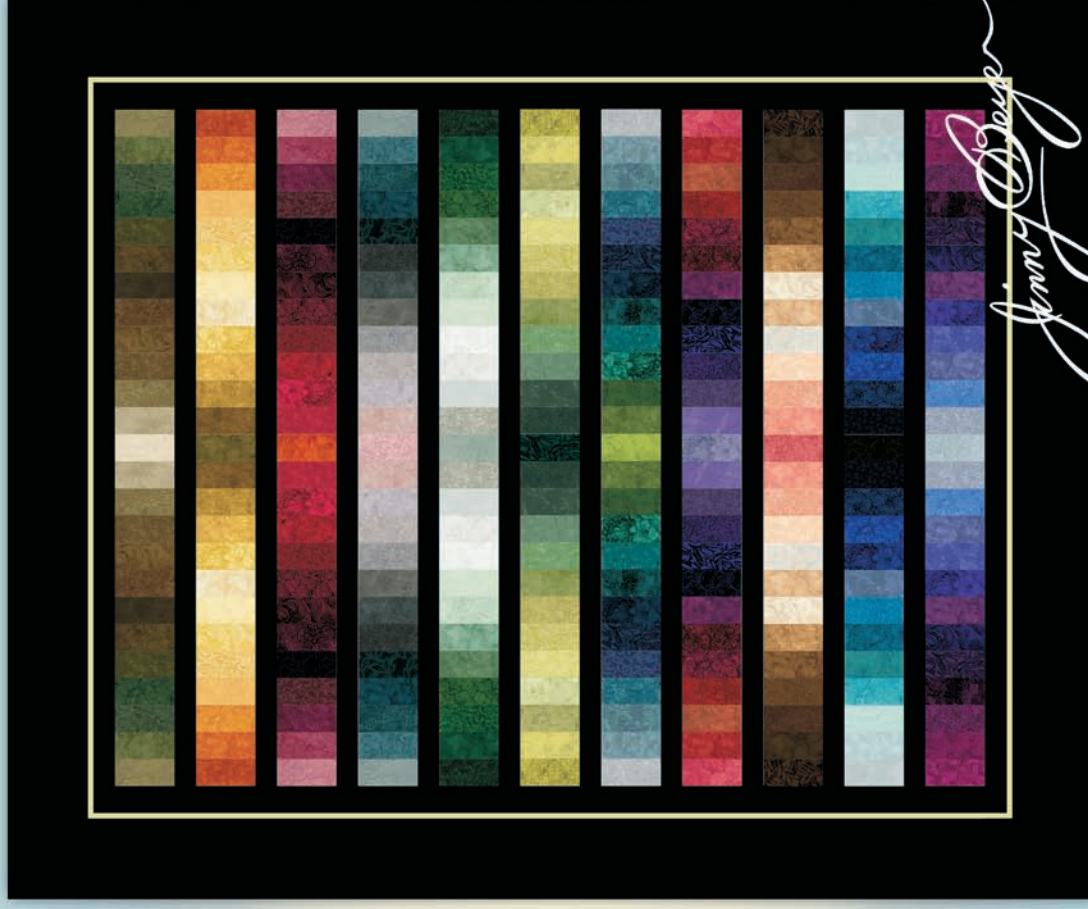
- One 150-piece set of 5" Palette Collection Charm Squares
- 3½ yards black fabric
- 3/8 yard fabric for accent border

4 yards of fabric required for backing (horizontal seam)

©2011, 2014, 2017 Jinny Beyer
Quilt Designed by Jane Allingham for Jinny Beyer Studio

Spectrum

Featuring fabrics from the Jinny Beyer Palette Collection



Finishes 67" x 81½"



#quiltwithlove

Spectrum features almost every fabric in Jinny Beyer's 150-piece Palette Collection, creating a striking effect. Using pre-sorted, pre-cut fabric squares makes this glowing quilt quick to sew and suitable for quilters of any level of experience.

All seam allowances are $\frac{1}{4}$ -inch. WOF = Width of Fabric; LOF = Length of Fabric. Press seams after sewing. Read the entire pattern before beginning.

Step 1: Make Color Strips

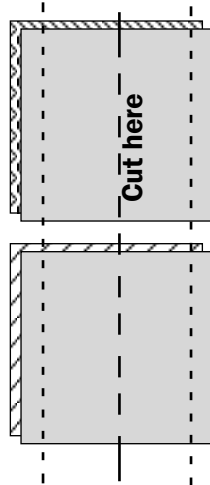
The charm squares in the kit are in order from Fabric 1 (taupe) to Fabric 150 (pale pink.). It is very important that you keep them in order. You might choose to number them with chalk, painter's tape or a sticky label. You can also refer to the Palette Collection Fabric Guide to identify the fabrics.

Spectrum uses 143 of the 150 charm squares provided in the kit. Fabric #48 (black) and the last six fabrics in the set (a series of pinks, numbers 145-150) are not used.

Each horizontal row is sewn from a set of thirteen fabrics. Work with one set at a time.

For the first row, set Fabric 1 aside. Pair the next twelve fabrics right-sides together: Fabric 2 with Fabric 3, Fabric 4 with Fabric 5, etc. Sew each pair in the set together on one side, then sew them together on the opposite side as in the diagram, right. (Chain-piecing the pairs will help keep them organized.)

Cut each pair in half, creating two identical units. Press each unit open. (Units measure $4\frac{1}{2}$ " x 5".)



Press the units open. (There are two of each.)

Sew the units together in order. Cut the reserved Fabric 1 square in half lengthwise to make two pieces measuring $2\frac{1}{2}$ " x 5"; only one piece is used. Sew the units and center patch together as illustrated below.

Repeat this process to make a total of eleven rows, referring to the color image of the quilt, the Fabric Guide, and the row number scheme in the next column. Note that after making a row, the next fabric is always used for the center patch in the next row.



Row 1: Sew the units together as shown.

- Row 1: 13 → 2, 1, 2 → 13
- Row 2: 26 → 15, 14, 15 → 26
- Row 3: 39 → 28, 27, 28 → 39
- Row 4: 53 → 41 (excl. 48), 40, 41 → 53 (excl. 48)
- Row 5: 66 → 55, 54, 55 → 66
- Row 6: 79 → 68, 67, 68 → 79
- Row 7: 92 → 81, 80, 81 → 92
- Row 8: 105 → 94, 93, 94 → 105
- Row 9: 118 → 107, 106, 107 → 118
- Row 10: 131 → 120, 119, 120 → 131
- Row 11: 144 → 133, 132, 133 → 144

The rows should measure 5" x $50\frac{1}{2}$ ".

Step 2: Make & Attach Sashing

From the black fabric, cut ten sashing strips measuring 2" x $50\frac{1}{2}$ " (or the length of your rows).

Sew a sashing strip to the bottom of Rows 1-10, then sew the rows together in order, beginning with the Row 1/sashing unit and ending with Row 11. The quilt center should measure $50\frac{1}{2}$ " x 65".

Step 3: Cut the Borders

(If the quilt center finished larger than the measurement noted, you may need to adjust your outer border measurements.)

Outer Border. From the black fabric, cut two pieces measuring 7" x 70" (sides), and two pieces measuring 7" x $67\frac{1}{2}$ " (top/bottom).

Inner Border. From the black fabric, cut two pieces measuring $2\frac{1}{2}$ " x 65" (sides) and two measuring $2\frac{1}{2}$ " x $54\frac{1}{2}$ " (top/bottom).

Accent Border. From the accent fabric, cut strips $1\frac{1}{2}$ " wide. Piece as necessary to make two strips measuring 65" (sides) and two strips measuring $54\frac{1}{2}$ " long (top/bottom). Press in half lengthwise, wrong sides together.

Step 4: Add the Borders

Inner Border. Sew the side borders to the quilt first, then add the top/bottom borders. The quilt should now measure 54½" x 68½".

Accent & Outer Border. The accent strips will be sewn to the quilt at the same time as the outer borders.

Pin the longer accent strips to the sides of the quilt, aligning the raw edges. Place the black side borders wrong side up on the accent strip, aligning the raw edges. (The accent strip will be sandwiched between the two black borders.) Adjust the pins to go through all layers. Sew the seams on both sides of the quilt. Press the black outer borders right sides out and the accent strips toward the quilt.

For the top, align the raw edge of the accent strip with the edge of the quilt and pin in place. At the ends, tuck the accent strip under the side accent strips to hide the raw edges. Place the black top borders wrong side up on the accent strip, aligning the raw edges. Adjust the pins to go through all layers and stitch. Repeat for the bottom. Press the borders right side out and the accent strips toward the quilt.

If desired, top-stitch the folded edge of the accent strip to the quilt. The strip can also be stitched down during quilting or left open.

Step 5: Finish the Quilt

Layer the quilt as follows: backing (wrong side up), batting, quilt top (right side up). Baste the layers together, and quilt as desired.

When the quilting is completed, trim the backing and batting even with quilt top edges.

Make binding strips using the reserved fabric and bind using your favorite method.

Jinny Beyer Palette Collection #13

P#1	2201-001
P#2	7424-006
P#3	8868-001
P#4	6740-001
P#5	3364-001
P#6	6342-005
P#7	2200-001
P#8	5866-070
P#9	6740-002
P#10	3365-001
P#11	2204-001
P#12	7424-007
P#13	6931-020
P#14	4795-020
P#15	6340-010
P#16	7132-022
P#17	5866-071
P#18	3366-001
P#19	7427-020
P#20	7424-008
P#21	3364-002
P#22	2204-002
P#23	6342-006
P#24	3365-002
P#25	2203-002
P#26	2202-001
P#27	2200-002
P#28	6740-003
P#29	3366-002
P#30	7132-023
P#31	0691-006
P#32	8737-005
P#33	3364-003
P#34	6931-021
P#35	4732-001
P#36	0691-007
P#37	5866-072
P#38	7424-010

P#39	6931-022
P#40	6342-007
P#41	6340-011
P#42	7132-024
P#43	2204-003
P#44	6342-008
P#45	2200-003
P#46	6931-023
P#47	6342-009
P#48	9410-014
P#49	4732-002
P#50	2203-003
P#51	8868-002
P#52	2204-004
P#53	6931-024
P#54	7424-011
P#55	6740-004
P#56	7427-022
P#57	3367-001
P#58	7132-025
P#59	2201-002
P#60	6931-026
P#61	4795-021
P#62	5866-073
P#63	8737-006
P#64	0691-008
P#65	4795-022
P#66	3366-003
P#67	3368-001
P#68	6342-010
P#69	7427-023
P#70	0498-006
P#71	2201-003
P#72	2202-002
P#73	6740-005
P#74	3368-002
P#75	2201-004
P#76	3367-002

P#77	3365-003
P#78	2200-004
P#79	8737-007
P#80	3364-004
P#81	6340-013
P#82	7132-026
P#83	3366-004
P#84	3365-004
P#85	7424-012
P#86	3366-005
P#87	3368-003
P#88	0691-009
P#89	6342-011
P#90	7427-024
P#91	7132-027
P#92	2201-006
P#93	3366-006
P#94	2200-005
P#95	6740-008
P#96	8868-005
P#97	3368-004
P#98	4732-004
P#99	3367-003
P#100	6342-012
P#101	3365-005
P#102	3369-001
P#103	5866-021
P#104	2203-005
P#105	3364-005
P#106	3365-006
P#107	4795-023
P#108	6342-013
P#109	2201-007
P#110	3367-004
P#111	3364-006
P#112	4795-024
P#113	5866-074
P#114	2203-006

P#115	2204-006
P#116	8868-006
P#117	4795-025
P#118	3368-005
P#119	4732-003
P#120	9410-003
P#121	8737-008
P#122	3365-007
P#123	3366-007
P#124	7427-025
P#125	0691-011
P#126	7132-029
P#127	6931-027
P#128	3365-008
P#129	2204-007
P#130	0498-010
P#131	2200-006
P#132	8868-007
P#133	6740-007
P#134	3365-009
P#135	2203-007
P#136	7132-030
P#137	3366-008
P#138	2203-008
P#139	3364-007
P#140	3368-006
P#141	7424-013
P#142	8737-010
P#143	2200-007
P#144	0498-011
P#145	8737-011
P#146	4795-026
P#147	5866-075
P#148	0498-012
P#149	7427-027
P#150	3364-008

To order fabrics from the
Jinny Beyer Palette Collection,
visit www.jinnybeyer.com

Printers will produce color of varying accuracy.



JINNY BEYER STUDIO
776F Walker Road • Great Falls, VA 22066
www.jinnybeyer.com • 866.759.7373

©2017, Jinny Beyer