



# EASY PIECED

## TABLE RUNNER SERIES

—September—  
12½" × 51½"



### REQUIRED MATERIALS

- ¼ yard cream
- 9" × 21" (Fat Eighth) orange
- 9" × 21" (Fat Eighth) maroon
- 14" × 14" teal
- 14" × 14" green
- 14" × 14" light teal
- 27" × 21" maroon plaid for binding
- various colorful fabrics for appliqué
- 55" × 21" for backing
- (4) ¾" ivory buttons
- (2) ¾" black buttons

### CUT FABRICS

From **cream**, cut:

- (6) 7" × 7" squares for **piecing**

From **orange**, cut:

- (2) 7" × 7" squares for **piecing**

From **maroon**, cut:

- (2) 7" × 7" squares for **piecing**

From **teal**, cut:

- (1) 7" × 7" square for **piecing**
- (2) 1½" × 12½" strips for **inner sashing**

From **green**, cut:

- (1) 7" × 7" square for **piecing**
- (2) 1½" × 12½" rectangles for **outer sashing**

From **light teal**, cut:

- (2) 6" × 12½" rectangles for **appliqué background**

From **maroon plaid**, cut:

- Enough 2½" strips **on the bias** so that, when pieced, **binding** measures at least 136".

### RECOMMENDED PRODUCTS

- Wafer 1 Lightbox
- Appliqué Pressing Sheet
- Olfa Spinning Rotary Mat 17" × 17"
- Shabby Fabrics Rectangle Ruler 2½" × 6½" Creative Grids
- Creative Grids 2½" × 24½" Ruler
- Creative Grids 12½" × 12½" Square Ruler
- Patchwork Pins
- Magnetic Pin Caddy
- Rotary Cutter

All available at [ShabbyFabrics.com](http://ShabbyFabrics.com)

As seen on our  
**EASY PIECED TABLE RUNNER  
SERIES - SEPTEMBER**

video featured on our YouTube channel:



[YouTube.com/Shabby Fabrics](https://www.youtube.com/ShabbyFabrics)

### PLEASE NOTE

WOF = Width of Fabric

RST = Right Sides Together

All seams are ¼" unless otherwise noted.

Please read all instructions carefully before beginning.

# DISAPPEARING 4-PATCH

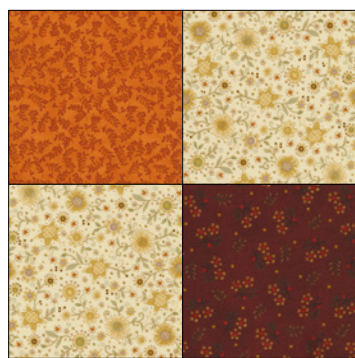
---

**FOR THIS BLOCK, PRESS ALL SEAMS OPEN.**

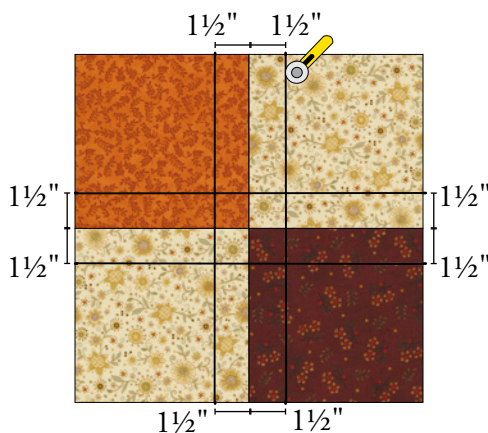
**STEP 1:** Sew (2) cream 7" × 7" squares, (1) orange 7" × 7" square, and (1) maroon 7" × 7" square into a 4-Patch as shown.

**STEP 2:** Measure and cut 1½" from center seams.

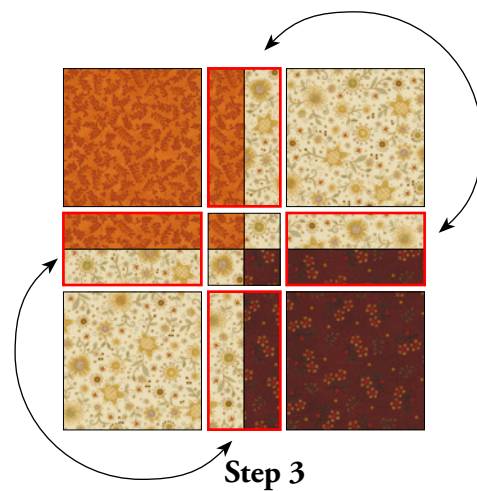
**STEP 3:** Swap locations of center slice units (outlined in red) as shown.



**Step 1**



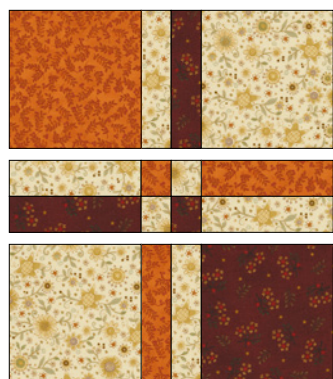
**Step 2**



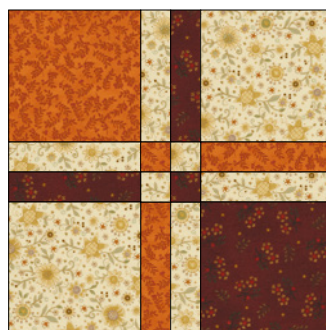
**Step 3**

**STEP 4:** Sew units together into rows as shown.

**STEP 5:** Sew rows together as shown. Block should measure 12½" × 12½".



**Step 4**



**Step 5**

Repeat to make a total of (3) Disappearing 4-Patch Blocks, (2) that are red and orange, and (1) that is teal and green. Set blocks aside for assembly at a later step.

## APPLIQUE

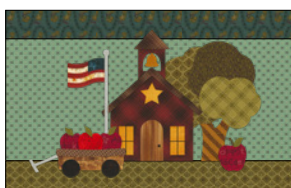
Sew (1) **inner sashing** strip to a light teal **background**; press toward inner sashing. Repeat with second background.



Your diagram has two pages, a **Reverse Diagram** and an **Assembly Diagram**. When tracing shapes for fusible appliqué, use the Reverse Diagram.

Before assembling applique, decide whether you want window panes in your windows. If you do, remove paper backing from windows and trace window lines with a fine-tipped permanent marking pen (*such as a Micron pen*).

Gently peel fusible paper from the back of each of the remaining shapes. Refer to **Assembly Diagram** to arrange shapes on background fabric. **NOTE:** Schoolhouse and tree trunk will be sewn into outer sashing seam; align these shapes with the raw edge of background.



Place shapes 1-18 (schoolhouse, tree, and flag), and appliqué in place using the method and stitch of your choice.

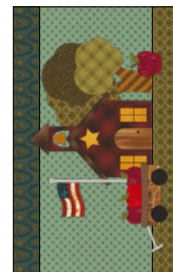
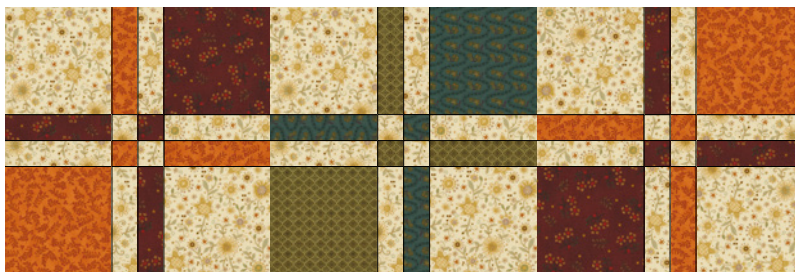
Sew (1) **outer sashing** strip to bottom of **background**; press toward outer sashing. Repeat with second background.

Place remaining shapes, 19-32 (wagon and apple), and appliqué in place using the method and stitch of your choice.

*If desired, stitch window panes using a straight stitch (sewing over the lines twice to make them stand out).*

## ASSEMBLE TABLE RUNNER

Sew blocks together in a row, pressing seams open. Sew one appliqué unit to each side as shown.



## FINISH TABLE RUNNER

Layer top, batting, and backing. Quilt as desired.

Piece binding into one long strip. (We used a straight seam so we could match up the plaid.) Fold in half lengthwise, wrong sides together, and press. Line up raw edges of the binding with the raw edge of the table runner. Sew binding to the front side of the table runner, starting at any side. Turn the binding over and hand stitch to the back of the table runner.

*If desired, add (1) cream button to the center of each wagon wheel and (1) black button for the doorknob, securing with the thread of your choice.*

Shop 24/7 for BOMs and Clubs, kits, and *more* at [ShabbyFabrics.com](http://ShabbyFabrics.com)!



Use this diagram for fusible appliqué

ShabbyFabrics.com

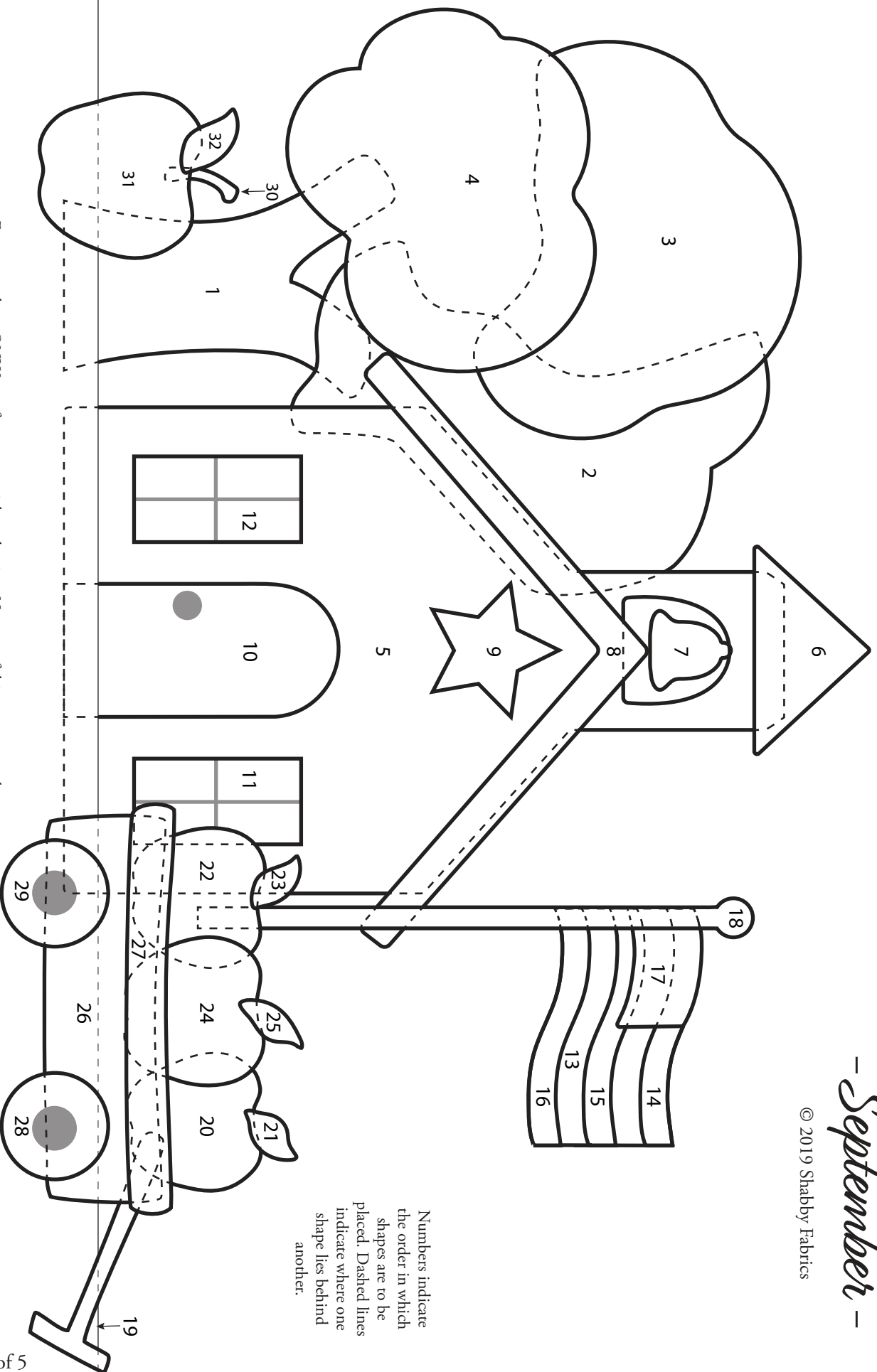


# EASY PIECED

## TABLE RUNNER SERIES

– September –

© 2019 Shabby Fabrics



For personal use ONLY, not for commercial production. No part of this pattern may be digitized or reproduced in any form unless given express written consent by Shabby Fabrics. All designs are protected by federal copyright law. All rights reserved.



# EASY PIECED

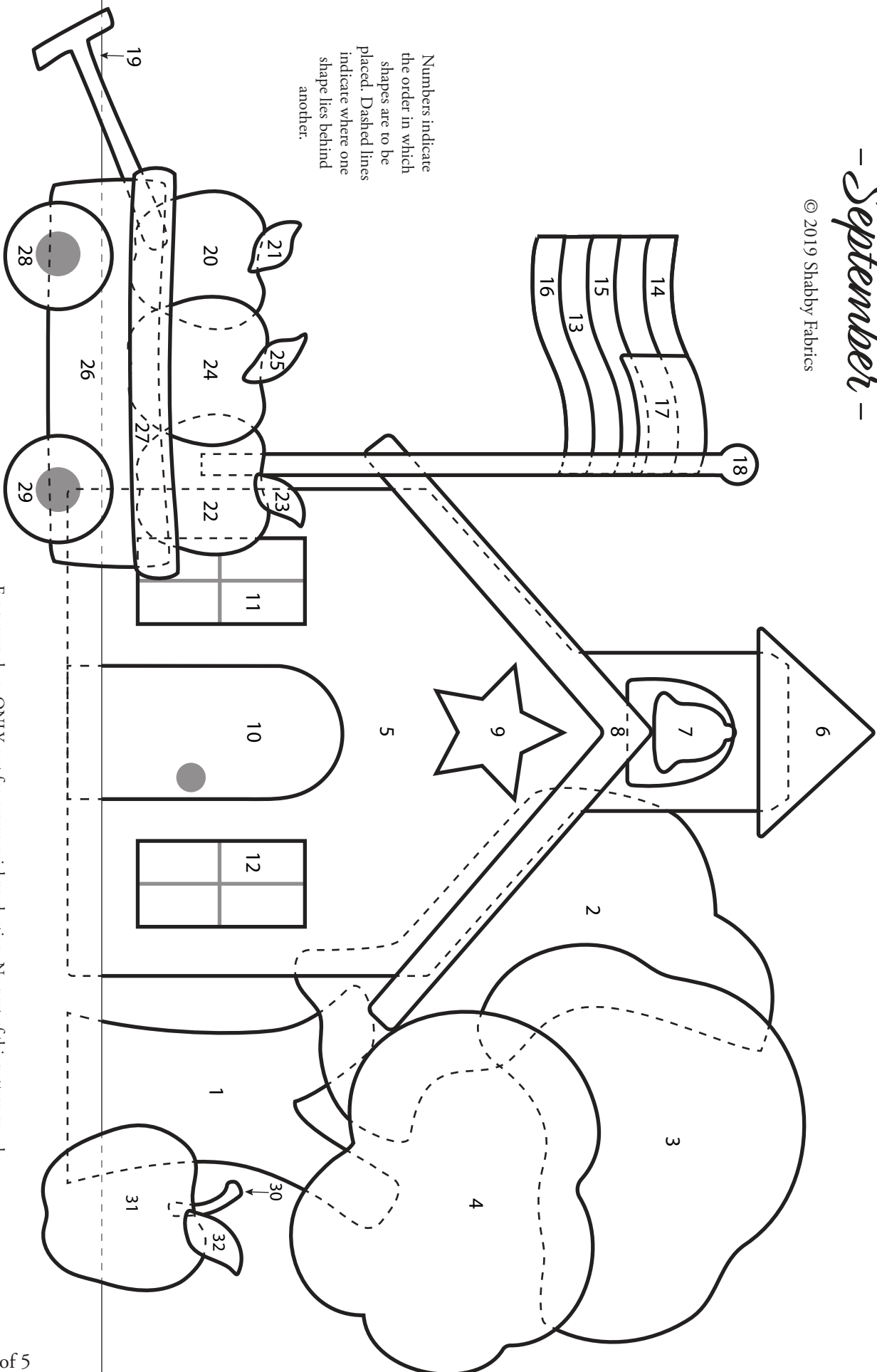
## TABLE RUNNER SERIES

— *September* —

© 2019 Shabby Fabrics

ShabbyFabrics.com

**Assembly Diagram**  
Use this diagram for placement



For personal use ONLY, not for commercial production. No part of this pattern may be digitized or reproduced in any form unless given express written consent by Shabby Fabrics. All designs are protected by federal copyright law. All rights reserved.