

This information is for use with the
Christmas Wreath
WALL HANGING
project featured on our YouTube channel:

 [YouTube.com/ShabbyFabrics](https://www.youtube.com/ShabbyFabrics)

Finished size: 33" x 33"

FABRIC REQUIREMENTS

.....

- 1 yd of cream with red dot for **backgrounds** and **wreath centers**
Cut (4) 14½" x 14½" squares
Cut (4) 4" x 4" squares
- (80) 2½" x 5" rectangles in various greens for **Dresden fans**
We selected 10 green Essential Gems Strip fabrics to create the wreaths for all four blocks.
Cut each strip into (8) 5" segments. Divide the 5" segments into four piles of 20 segments each, so each pile has (2) 5" segments of each fabric. Each pile makes one wreath.
- (2) 1½" x WOF for **sashing**
- (4) 2½" x WOF for **borders**
- ½ yd for **binding**
- 1 yd for **backing** (based on 43" wide fabric)

DRESDEN WREATHS

.....

Use the 5" fan on your Dresden Plate Ruler to cut (80) **Dresden fans** from the green segments. Use the Circle Segment Ruler to cut (4) **wreath centers** from the cream with red dot fabric. Refer to video for assembly instructions.

REQUIRED PRODUCTS:

Creative Grids® Non-Slip 18 Degree
Dresden Plate Ruler

RECOMMENDED PRODUCTS:

Olfa® Spinning Rotary Mat

Prairie Pointer

Roxanne® Glue-Baste-It®

MonoPoly™ Clear Thread

All available at [ShabbyFabrics.com](https://www.ShabbyFabrics.com)

FINISH WALL HANGING

.....

Sew (1) 1½" x 14½" **sashing strip** to the bottom of Block 1. Sew (1) 1½" x 14½" sashing strip to the bottom of Block 2. Sew Blocks 1 and 3 together, top to bottom. Sew Blocks 2 and 4 together, top to bottom. Sew (1) 1½" x 29½" sashing strip between the two columns. Press all seams toward sashing.

Sew **borders** to the left and right sides of the quilt and trim to be even with the quilt. Sew borders to the top and bottom of the quilt and trim to be even with the quilt. Press all seams toward border.

Quilt and bind as desired.

*See next page
to learn how to create the coordinating fabric bows.*

[ShabbyFabrics.com](https://www.ShabbyFabrics.com)

© 2016 Jennifer Bosworth

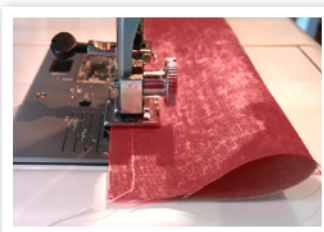
All designs, photographs, and images are protected by federal copyright law. All rights reserved.

FABRIC BOW

.....

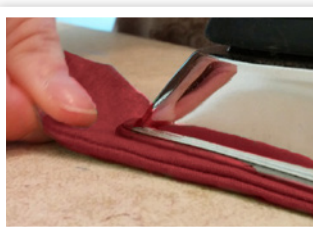
From **bow** fabric, cut:

- (4) 3½" × 16" for **bows**
- (4) 2½" × 2½" for **bow knots**

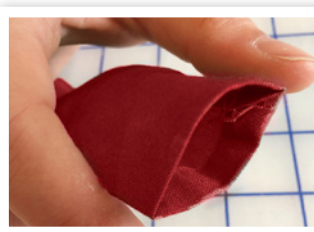


Take one **bow** strip and fold in half lengthwise, RST. Press.

Sew up the side, leaving the top and bottom open.



Turn the fabric right side out through one of the ends. Press, with the seam aligned along one fold.



Tuck the raw ends in ¼" and press. Using coordinating thread, topstitch the ends closed with a ⅛" seam allowance.



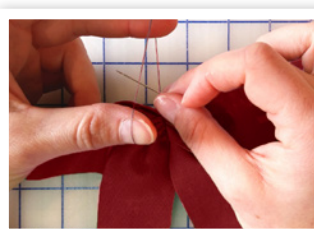
Cross the two ends of the bow, creating an "X" shape.



Run a basting stitch up the center where the fabrics overlap and continue sewing up the marked center of line of the fabric.



Pull the thread tight, bunching the bow fabric in the center, and wrap the thread around the center tightly 4-5 times.



Secure the stitching in place and knot the thread. Repeat for all four bows.



Fold the **knot** fabric in half, WST, and press. Open up the fabric and fold the raw edges toward the center, and press. Fold in half again, and press.



Center the knot fabric over the center of your bow and wrap the two ends around the backside of the bow.



Hot glue the bow knot ends in place on the back side of the bow.

ShabbyFabrics®.com

© 2016 Jennifer Bosworth

All designs, photographs, and images are protected by federal copyright law. All rights reserved.