

Bess' Flower Garden

SAWTOOTH 16-PATCH TABLE RUNNER

16½" × 54¾"

REQUIRED PRODUCTS

- Creative Grids Ultimate Flying Geese Tool #CGRDH4

Available at ShabbyFabrics.com



Follow along with our FREE tutorial,
**HOW TO MAKE THE
SAWTOOTH
16-PATCH BLOCK**
as featured on our YouTube channel:



[YouTube.com/Shabby Fabrics](https://www.youtube.com/ShabbyFabrics)

CUT FABRICS



From **Fabric A**, cut:

- (1) 2" × 21" strip for **16-Patch**



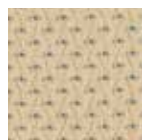
From **Fabric B**, cut:

- (2) 2" × 21" strips for **16-Patch**



From **Fabric C**, cut:

- (1) 2" × 21" strip for **16-Patch**



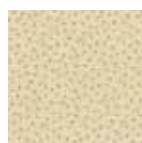
From **Fabric D**, cut:

- (1) 2" × 21" strip for **16-Patch**



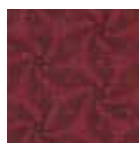
From **Fabric E**, cut:

- (2) 2" × 21" strips for **16-Patch**



From **Fabric F**, cut:

- (2) 2" × 21" strips for **16-Patch**



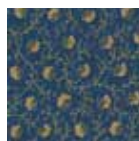
From **Fabric G**, cut:

- (1) 2" × 21" strip for **16-Patch**



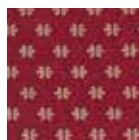
From **Fabric H**, cut:

- (4) 7¾" × 7¾" squares for **flying geese**
- (16) 3½" × 3½" squares for **corners**



From **Fabric I**, cut:

- (16) 4¼" × 4¼" squares for **flying geese**



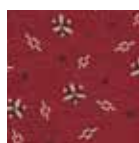
From **Fabric J**, cut:

- (3) 1¼" × 12½" strips for **sashing**
- (4) 1¼" × WOF strips for **inner border**



From **Fabric K**, cut:

- (4) 1¾" × WOF strips for **outer border**



From **Fabric L**, cut:

- (4) 2½" × WOF strips for **binding**

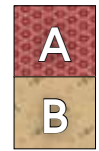
16-PATCH UNITS

Join (1) Fabric A strip with (1) Fabric B strip. Cut strip into 2" sections to make (8) A/B units. Press toward red.

Each A/B unit should measure $3\frac{1}{2}" \times 2"$.



Repeat with remaining 16-Patch strips to make the following units:



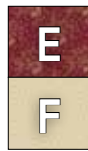
Make 8



Make 8



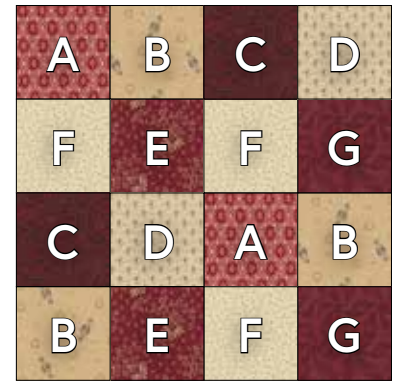
Make 4



Make 4



Make 8



Make 4

Refer to the image (*above right*) to arrange units to a 16-Patch block. Sew units together in rows, pressing seams toward reds. Sew rows together, pressing seams open. Make a total of (4) 16-Patch units. Each unit should measure $6\frac{1}{2}" \times 6\frac{1}{2}"$.

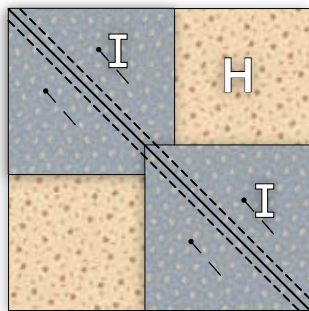
FLYING GEESE

STEP 1: Draw a diagonal line on the back of all Fabric I squares. Place (2) Fabric I squares in opposite corners of (1) $7\frac{3}{4}" \times 7\frac{3}{4}"$ Fabric H square, right sides together, and pin in place. Sew $\frac{1}{4}"$ along each side of the drawn line. Cut on drawn line. Press toward Fabric I. You will now have (2) units.

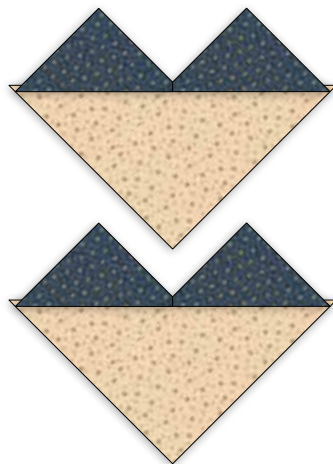
STEP 2: Place another Fabric I square on the corner of each unit, right sides together. Sew $\frac{1}{4}"$ along each side of the drawn line. Cut on the drawn line. Press toward Fabric I. You will now have two Flying Geese Units.

Use Creative Grids Ultimate Flying Geese Tool to trim Flying Geese Unit to $3\frac{1}{2}" \times 6\frac{1}{2}"$.

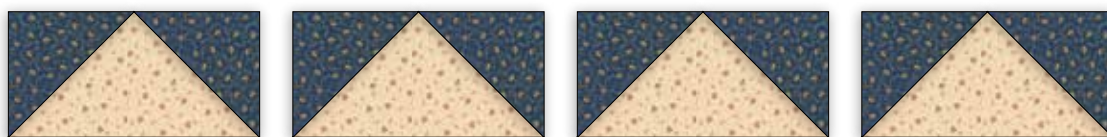
Continue to make a total of (16) Flying Geese units.



Step 1



Step 2

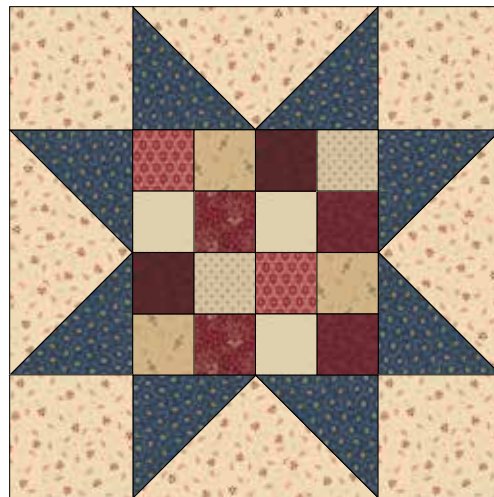


Flying Geese Units

ASSEMBLE BLOCKS

Use (4) Fabric H corners, (4) Flying Geese Units, and (1) 16-Patch unit per block. Refer to the image (*right*) to arrange units. Sew units together in rows. Press top and bottom rows toward Fabric H corners. Press middle row toward center. Sew rows together, pressing seams open.

Repeat to make (4) blocks. Each block should measure $12\frac{1}{2}" \times 12\frac{1}{2}"$.



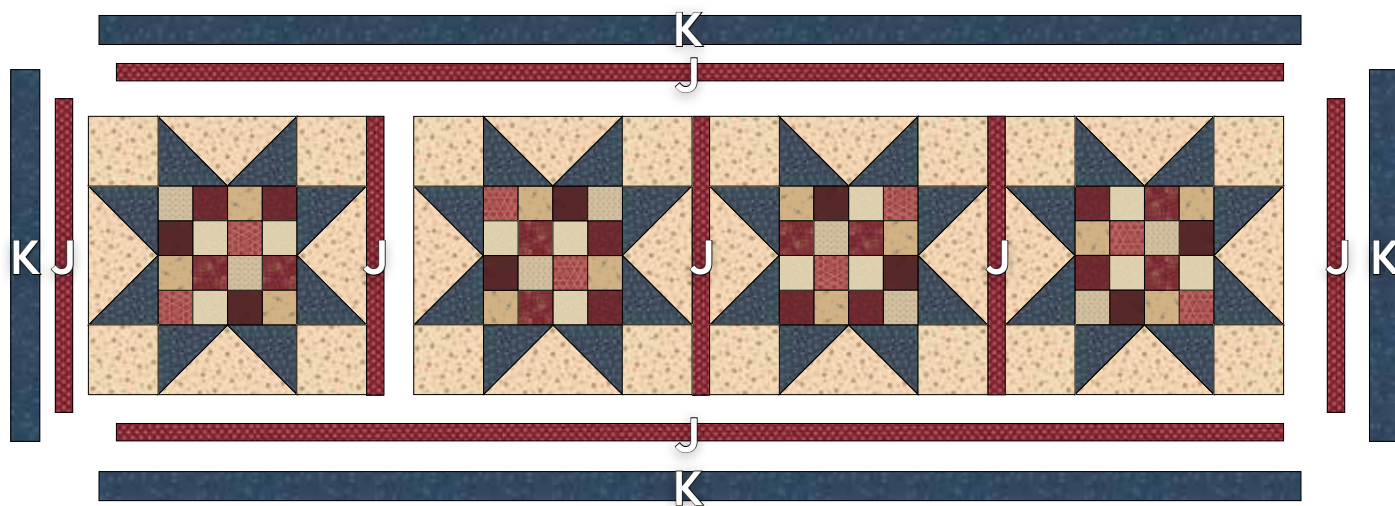
ASSEMBLE TABLE RUNNER

Lay out blocks in a row as desired. *We rotated our blocks so there would be variety in fabric placement.* Place (1) **sashing** strip between each block. Sew the (4) blocks and (3) sashing strips together into a row, pressing seams toward sashing.

For remaining steps, press seams outward toward borders.

Sew **inner border** strips together into one continuous strip. Sew inner border to each long side of the pieced block unit, and trim to be even with the block unit. Sew inner border to each short end, and trim to be even with the runner.

Sew **outer border** strips together into one continuous strip. Sew outer border to each long side of the runner, and trim to be even with the runner. Sew outer border to each short end, and trim to be even with the runner.



FINISH QUILT

Layer table runner top, batting, and **backing**. Quilt as desired.

Sew **binding** strips together into one continuous strip. Fold binding in half lengthwise with wrong sides together, and press. Sew binding to the front side of the table runner, starting at any side. Turn the binding over and hand stitch to the back of the table runner.