

PIECED TULIP BLOCK

NOTE

All seam allowances are $\frac{1}{4}$ " RST = Right Sides Together

Follow along with the
HOW TO MAKE A
PIECED TULIP BLOCK
video featured on our YouTube channel:



[YouTube.com/Shabby Fabrics](https://www.youtube.com/ShabbyFabrics)



CUT FABRICS

From **white**, cut:

- (1) $2\frac{1}{4}$ " \times $2\frac{3}{4}$ " rectangle for **Stem Block** (label "E")
- (2) $2\frac{1}{4}$ " \times $2\frac{1}{4}$ " squares for **Stem Block** (label "C")
- (1) $2\frac{1}{4}$ " \times $1\frac{3}{4}$ " rectangle for **Stem Block** (label "G")
- (1) $2\frac{1}{4}$ " \times $1\frac{1}{2}$ " rectangle for **Stem Block** (label "F")
- (6) $1\frac{1}{2}$ " \times $1\frac{1}{2}$ " squares for **Tulip Block** (label "B")

From **green**, cut:

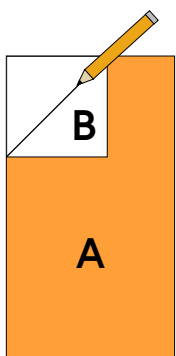
- (2) $2\frac{1}{4}$ " \times $2\frac{1}{4}$ " squares for **Stem Block** (label "D")
- (1) 1" \times $4\frac{1}{2}$ " rectangle for **Stem Block** (label "H")

From **tulip color**, cut:

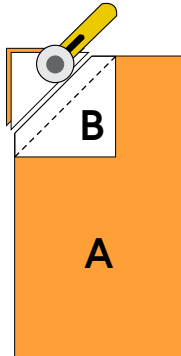
- (2) $2\frac{1}{2}$ " \times $4\frac{1}{2}$ " rectangles for **Tulip Block** (label "A")

TULIP BLOCK

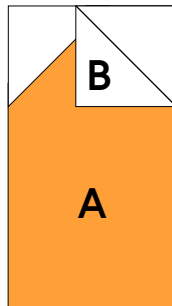
STEP 1: On the back of three white "B" squares, draw a line diagonally from corner to corner. Place one white "B" square in upper left corner of color "A" rectangle, RST, noting the orientation of the diagonal. **STEP 2:** Sew on the drawn line, and trim seam allowance to $\frac{1}{4}$ ". Press to the outside. **STEP 3:** Place one white "B" square in the upper right corner of the rectangle, RST, noting the orientation of the diagonal. **STEP 4:** Sew on the drawn line, and trim seam allowance to $\frac{1}{4}$ ". Press to the outside. (*Continued on next page...*)



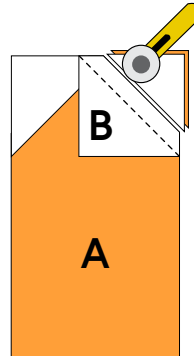
Step 1



Step 2



Step 3



Step 4

A Year in Words
WALL HANGINGS

KITS

as seen in the video
are available at

[ShabbyFabrics.com](https://www.shabbyfabrics.com)
while supplies last!

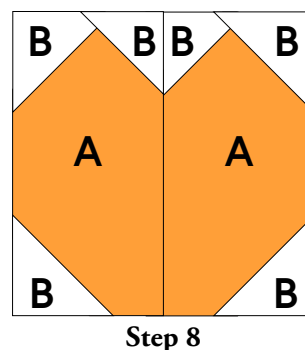
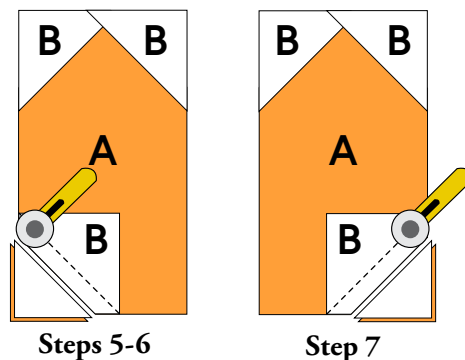
STEP 5: Place one “B” square in the lower left corner of the rectangle, RST, noting the orientation of the diagonal.

STEP 6: Sew on the drawn line, and trim seam allowance to $\frac{1}{4}$ ". Press to the outside. This is the left unit of your Tulip Block.

STEP 7: Repeat Steps 1-6 using (3) remaining “B” squares and “A” rectangle, but place the final “B” square in the lower *right* corner, *noting the orientation of the diagonal*. For this step, press all seams toward the inside. This is the right unit of your Tulip Block.

STEP 8: Join left unit and right unit of Tulip Block. Press seam open.

IMPORTANT: Tulip Block should measure $4\frac{1}{2}" \times 4\frac{1}{2}"$.



STEM BLOCK

STEP 1: On the back of a white “C” square, draw a line diagonally from corner to corner.

STEP 2: Place white “C” square on top of a green “D” square, RST, making sure to line up the corners.

STEP 3: Sew on the drawn line, and trim seam allowance to $\frac{1}{4}$ ". Press toward green.

STEP 4: Sew (1) white “E” rectangle to the bottom of this unit, pressing seams toward “E”. This is the left side of your Stem Block.

STEP 5: Repeat steps 1-3. Sew (1) white “F” rectangle to the top and one white “G” rectangle to the bottom of this unit, pressing seams toward “F” and “G”. This is the right side of your Stem Block.

STEP 6: Sew side units to each side of a green “H” rectangle. Press seams toward “H”.

IMPORTANT: Each Stem Block should measure $4\frac{1}{2}" \times 4\frac{1}{2}"$.

Join Stem Block to the bottom of Tulip Block.

Completed block should measure $4\frac{1}{2}" \times 8\frac{1}{2}"$.

