

FABRIC BASKET

Finishes to approx. 10" x 9" x 7"

PLEASE NOTE

All seams are 1/2" WOF = Width of Fabric

REQUIRED MATERIALS

- 1 Magic Pillowcase Kit, Standard Size
- 1/2 yard fusible fleece (44" - 45" wide)
- 1 yard fusible interfacing (20" wide)

RECOMMENDED PRODUCTS

- Creative Grids - 4 1/2" Square Ruler #CGR4
- Olfa 45mm Rotary Cutter
- Clover Point 2 Point Turner
- Clover Wonder Clips
- Clover Flower Head Pins

All available at ShabbyFabrics.com



CUT FABRICS

From **main body** fabric, cut:

- (1) 18" x WOF strip for **outer basket**
- (1) 8" x WOF strip for **lining**

From **cuff** fabric, cut:

- (1) 9" x WOF strip for **lining**

From **accent** fabric, cut:

- (1) 3" x WOF strip for **lining**

Follow along with the video
HOW TO MAKE A
FABRIC BASKET
USING A MAGIC PILLOWCASE KIT
on our YouTube channel:



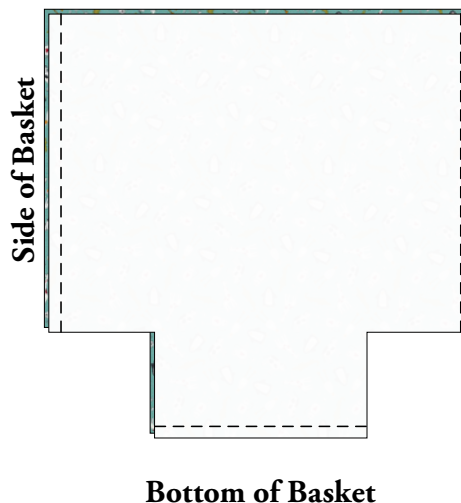
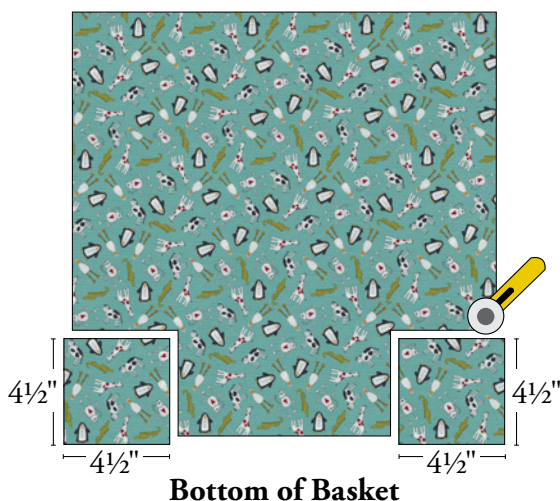
[YouTube.com/ShabbyFabrics](https://www.youtube.com/ShabbyFabrics)

OUTER BASKET

Fuse fusible fleece to wrong side of **outer basket** fabric. *Because fusible fleece can be sensitive to heat, we recommend ironing from the fabric side or using a pressing cloth.* From this, cut (2) 18" x 18" squares. Quilt if desired.

Cut 4 1/2" squares from bottom corners. (**IMPORTANT:** *If you are using directional fabric, note orientation is right side up before cutting.*)

Align squares, right sides together, and sew along sides and bottom with 1/2" seam allowance, leaving notched corners open. Press seams open.



BOXED CORNERS

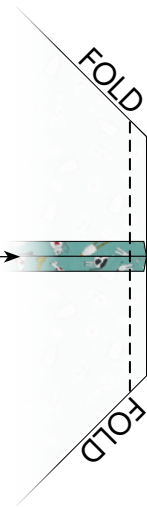
Fold fabric so the two raw edges of a notched corner are in a straight line, matching the Side Seam with the Bottom Seam. Sew along raw edge with a $\frac{1}{2}$ " seam allowance.

Repeat for corner on the other side.

This is your Outer Basket.

Do not turn right side out. Set aside for a later step.

Bottom Seam → ← Side Seam



LINING

Join 3" strip, 9" strip, and 8" strip as shown (right) using a $\frac{1}{2}$ " seam allowance. (**IMPORTANT:** If you are using directional fabric, note orientation before sewing. The 3" strip will be folded to the outside of the basket, so it should be oriented "upside down" in this arrangement.) Press seams open.

From this, cut (2) 18" × 18" squares.

From fusible interfacing, cut (2) 18" × 18" squares.

Fuse fusible interfacing to wrong side of each pieced lining square. Because fusible interfacing can be sensitive to heat, we recommend ironing from the fabric side or using a pressing cloth.

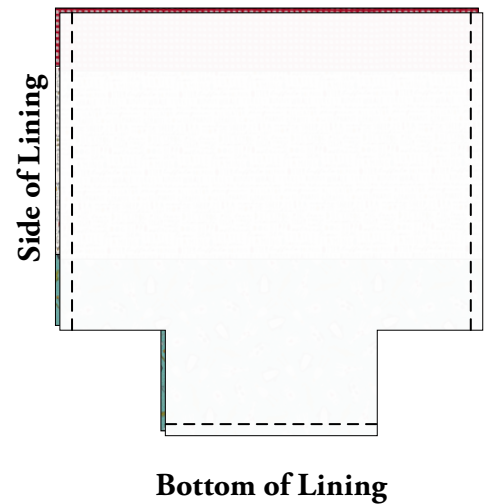
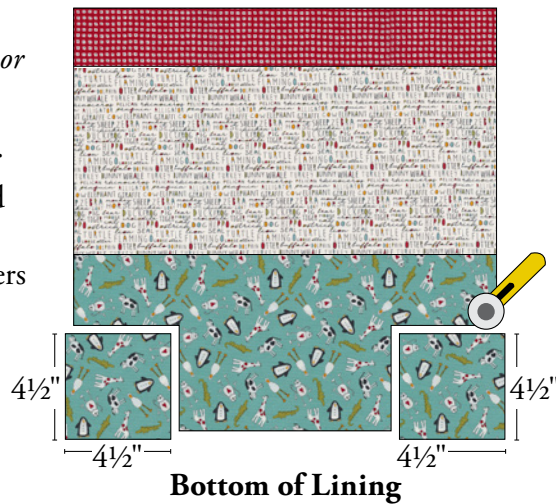
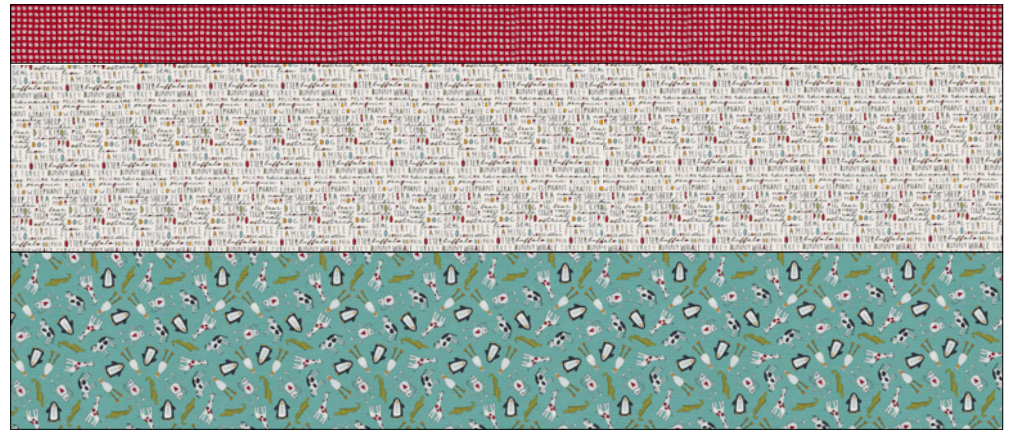
Cut $4\frac{1}{2}$ " squares from bottom corners.

Align squares, right sides together, and sew along sides and bottom with a $\frac{1}{2}$ " seam allowance, leaving notched corners open. Press seams open.

Refer to Boxed Corners instructions above to box both corners.

This is your Lining.

Turn right side out.



ASSEMBLE BASKET

Place Lining (right side out) inside Outer Basket (inside out), aligning raw edges and matching Side Seams. Sew around edge with a $\frac{1}{2}$ " seam allowance, leaving a 6" opening for turning.

Turn through opening. Use point turner to push out seams fully. Fold opening inward $\frac{1}{2}$ " and press. Use Wonder Clips around entire perimeter to secure opening and prevent seams from rolling inward. Top stitch $\frac{1}{8}$ " - $\frac{1}{4}$ " around entire perimeter.

Fold top edge down and out about 3" to create a cuff.