

PINT SIZE TABLE RUNNER

— January —

KITS available at
ShabbyFabrics.com
while supplies last!

PLEASE NOTE

All seams are 1/4"

WOF = Width of Fabric

RST = Right Sides Together

REQUIRED MATERIALS

- 14" x 14" light blue with white floral (**Fabric A**) for **appliqué backgrounds**
- 7" x 14" blue with white floral (**Fabric B**) for **piecing**
- 7" x 14" light blue with blue sprigs (**Fabric C**) for **piecing**
- 7" x 21" blue tonal dot (**Fabric D**) for **piecing**
- 12" x 21" dark blue tonal sprigs (**Fabric E**) for **piecing**
- 15" x 21" white with blue fleur de lis (**Fabric F**) for **piecing**
- 7" x WOF dark blue grunge (**Fabric G**) for **binding**
- 27" x 21" for **backing**
- various scraps for appliqué
- (4) die-cut felt snowflakes
- fusible webbing
- (4) small black buttons
- black embroidery floss

CUT FABRICS

From light blue with white floral (**Fabric A**), cut:

- (2) 5 1/2" x 12 1/2" rectangles for **appliqué backgrounds**

From blue with white floral (**Fabric B**), cut:

- (2) 5 1/2" x 5 1/2" squares for **HST**

From light blue with blue sprigs (**Fabric C**), cut:

- (2) 5 1/2" x 5 1/2" squares for **HST**

From blue tonal dot (**Fabric D**), cut:

- (16) 2 1/2" x 2 1/2" squares for **flying geese**

From dark blue tonal sprigs (**Fabric E**), cut:

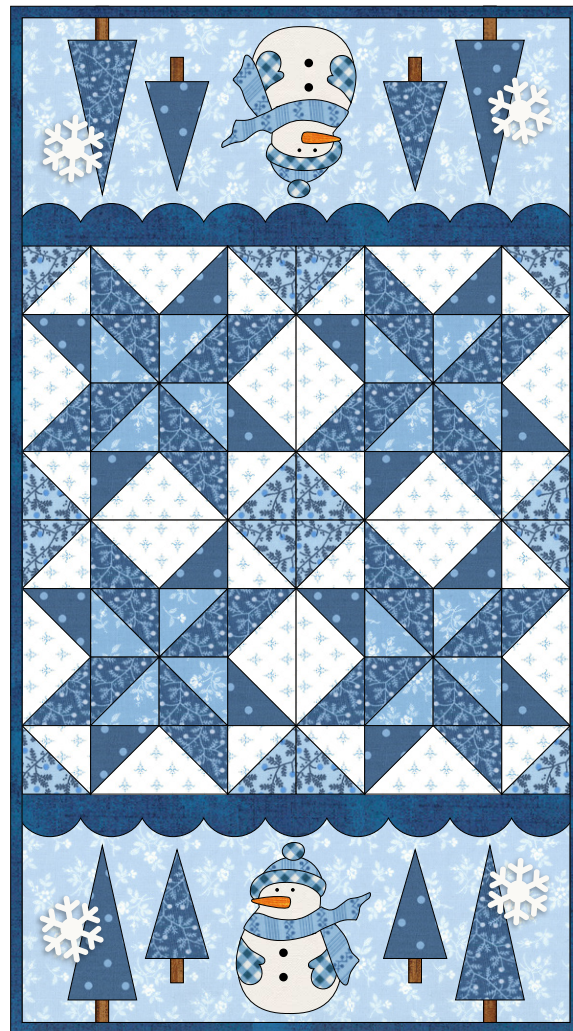
- (2) 5 1/2" x 5 1/2" squares for **HST**
- (16) 2 1/2" x 2 1/2" squares for **flying geese**

From white with blue fleur de lis (**Fabric F**), cut:

- (2) 5 1/2" x 5 1/2" squares for **HST**
- (16) 2 1/2" x 4" rectangles for **flying geese**

From dark blue grunge (**Fabric G**), cut:

- (2) 2 1/2" x WOF strips for **binding**



Finishes to: 12 1/2" x 22 1/2"

RECOMMENDED PRODUCTS

- Star Singles 1 1/2" Half Square Triangle Paper
- Creative Grids Folded Corner Clipper Tool #CGRFCC
- Creative Grids Ultimate Flying Geese Tool #CGRDH4
- Creative Grids 6 1/2" x 12 1/2" Ruler #CGR612
- Wafer 1 Lightbox
- Appli-Fuse Silicone Mat - 12" x 18"
- Richard Hemming Embroidery Needles Size 4

All available at ShabbyFabrics.com

As seen on our
**PINT SIZE TABLE RUNNER
SERIES - JANUARY**
video featured on our YouTube channel:



[YouTube.com/Shabby Fabrics](https://www.youtube.com/ShabbyFabrics)

HALF SQUARE TRIANGLES

If using Star Singles 1½" Half Square Triangle Paper: Use (4) papers, all Fabric B, C, E and F 5½" × 5½" squares; fabric squares will be slightly larger than the papers. Follow instructions included with papers to make a total of (16) B/E HST and (16) C/F HST, and skip ahead to ★Pinwheels.

If NOT using Star Singles 1½" Half Square Triangle Paper, subcut all 5½" × 5½" squares to (4) 2½" × 2½" each, and follow these steps for traditional HST construction:

STEP 1: On the back of (1) 2½" × 2½" B square, draw a line diagonally from corner to corner.

STEP 2: Layer this square and (1) 2½" × 2½" E square, RST, making sure to line up the edges.

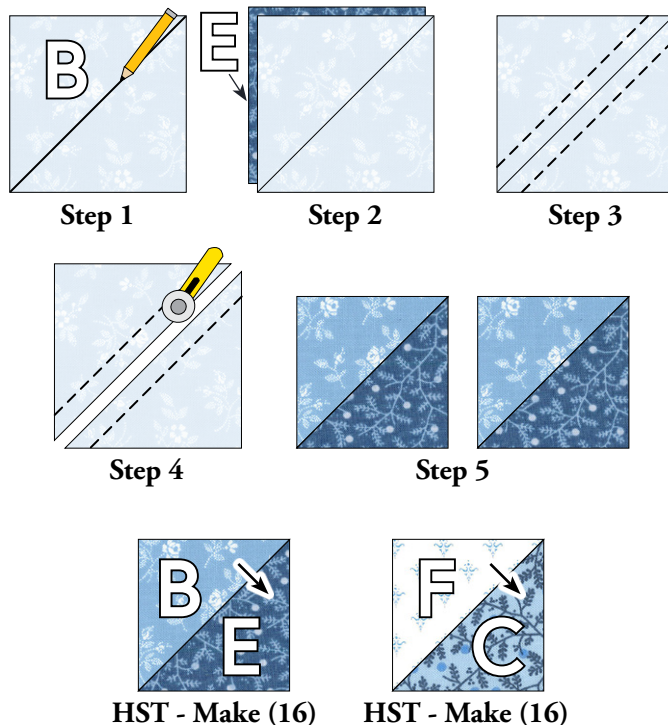
STEP 3: Sew ¼" on both sides of the drawn line.

STEP 4: Cut on the drawn line. Press toward darker fabric.

STEP 5: You will now have two B/E units.

STEP 6: Repeat Steps 1-5 to make a total of (16) B/E units and (16) C/F units.

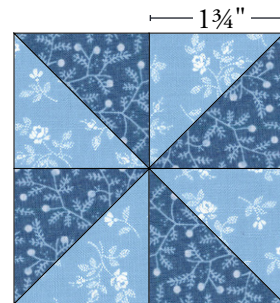
IMPORTANT: Trim all HST units to 2" × 2".



★PINWHEELS

Use (4) B/E HST. Arrange and sew them together as shown, pressing seams open.

Repeat to make a total of (4) Pinwheel units. Each unit should measure 3½" × 3½".



Pinwheel - Make (4)

FLYING GEESE

STEP 1: On the back of (1) E square, draw a line diagonally from corner to corner. Place this E square on the right side of (1) F rectangle, RST, noting the direction of the diagonal.

STEP 2: Sew on the drawn line, and trim seam allowance to ¼". Press toward E.

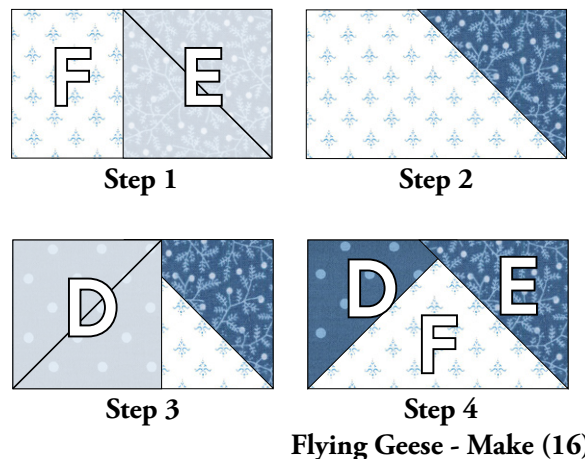
STEP 3: On the back of (1) D square, draw a line diagonally from corner to corner. Place this D square on the left side of the F rectangle, RST, noting the direction of the diagonal.

STEP 4: Sew on the drawn line, and trim seam allowance to ¼". Press toward D.

IMPORTANT: This block is oversized and must be trimmed.

If using the Creative Grids Ultimate Flying Geese Tool, use trim lines labeled "C." If using a generic ruler, trim unit to 2" × 3½".

Repeat to make a total of (16) Flying Geese units.



SNOWFLAKE BLOCKS

Use (1) Pinwheel unit, (4) Flying Geese Units and (4) HST per block.

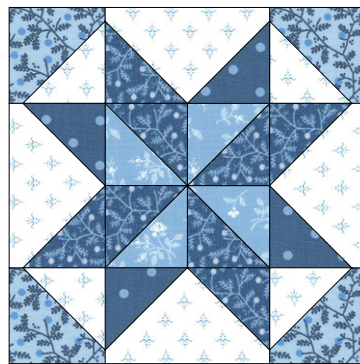
Arrange units as shown. Sew together into rows. Press open.

Sew rows together. Press open.

Block should measure $6\frac{1}{2}" \times 6\frac{1}{2}"$.

Make a total of (4) Snowflake Blocks.

Snowflake Block
Make (4)



APPLIQUÉ

NOTE: With the exception of the snowman, all appliqué shapes are symmetrical, so there is no need for a reverse diagram when tracing shapes for fusible appliqué. (*Reversed snowman is provided for tracing.*)

Gently peel fusible paper from the back of each shape. Refer to Assembly Diagram to arrange shapes on background fabric.

NOTE: When ironing felt snowflakes, we recommend covering shapes with a light-colored cloth to avoid scorching.

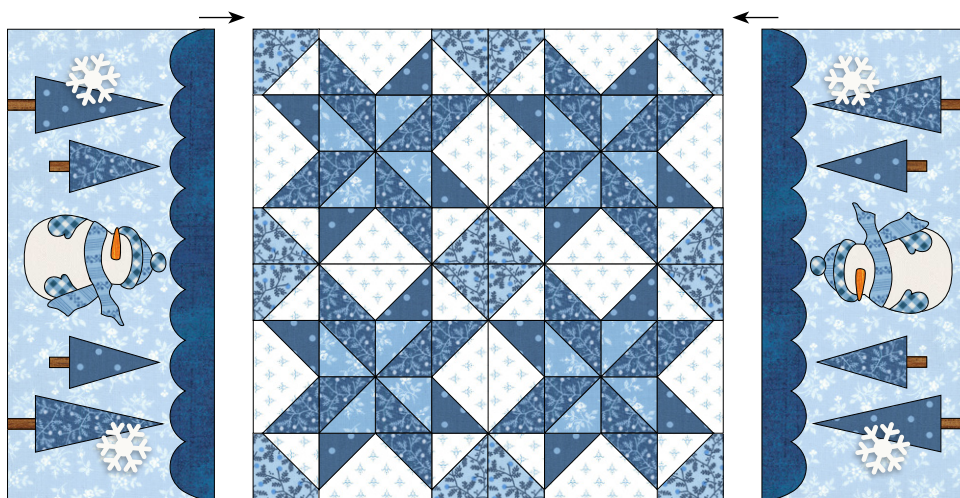
Appliqué in place using the method and stitch of your choice.



Appliqué - Make (2)

ASSEMBLE TABLE RUNNER

Arrange units as shown. Sew pieced blocks together in rows. Press open. Sew pieced rows together. Press open. Sew one appliqué unit to each end as shown. Press toward pieced blocks.



FINISH TABLE RUNNER

Layer top, batting, and backing. Quilt as desired.

Piece **binding** into one long strip. Fold in half lengthwise, wrong sides together, and press. Line up raw edges of the binding with the raw edge of the table runner. Sew binding to the front side of the table runner, starting at any side. Turn the binding over and machine stitch or hand sew to the back of the table runner.

EMBELLISHMENTS

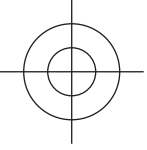
Refer to Assembly Diagram for placement. Using two strands of black embroidery floss, make eyes for the snowman with French knots. Use coordinating thread to secure snowman's buttons.

PINT SIZE TABLE RUNNER

— January —

© 2022 Shabby Fabrics

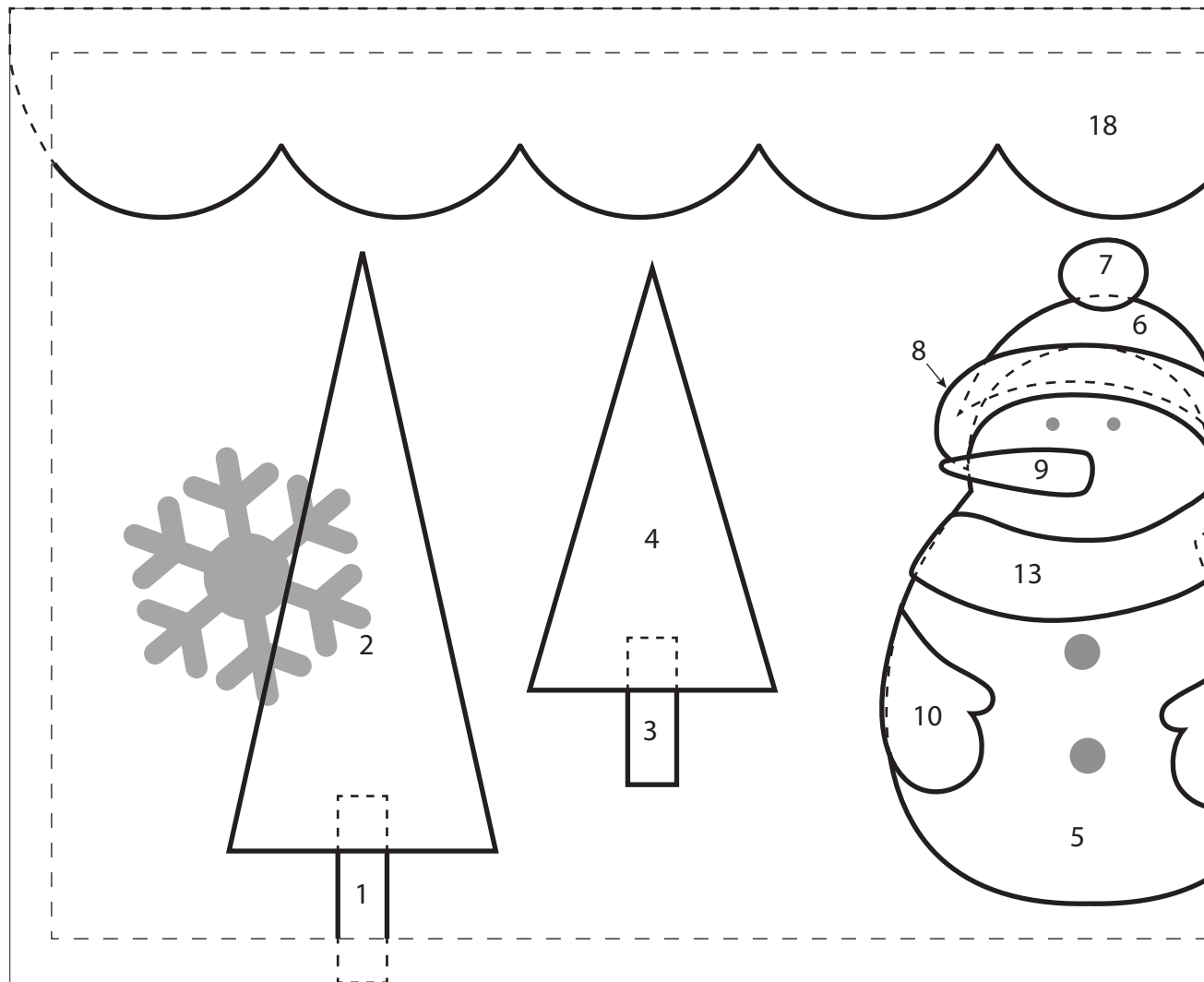
Numbers indicate the order in which shapes are to be placed.
Dashed lines indicate where one shape lies behind another.



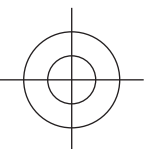
Assembly Diagram

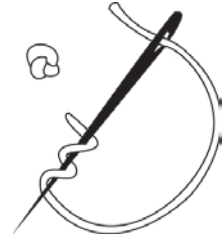
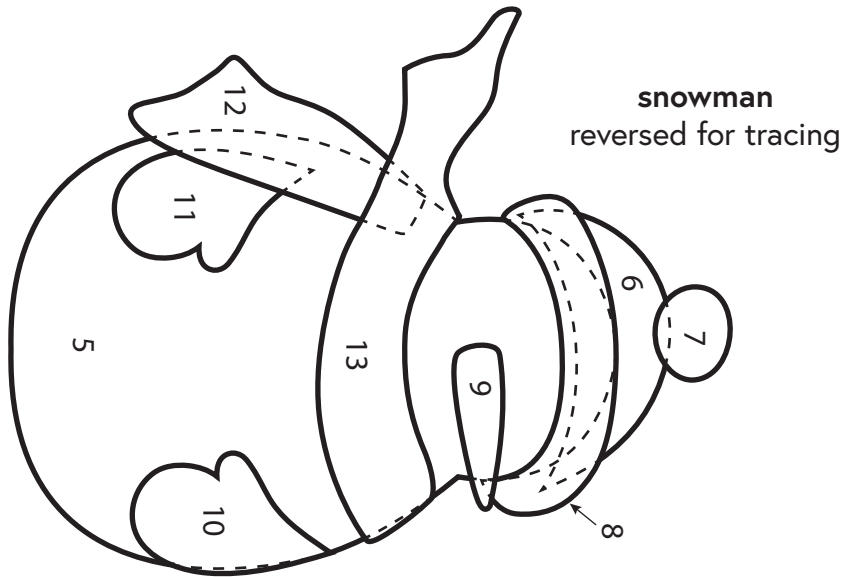
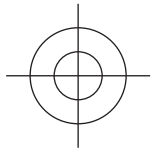
With the exception of the snowman (5 through 13),
all shapes are symmetrical;
diagram can be used for tracing and for placement

Align bullseye marks ⊕ on page 1 with
bullseye marks ⊕ on page 2, then tape
pages together



For personal use ONLY, not for commercial production. No part of this pattern may be reproduced, shared, or distributed in any form unless given express written consent by Shabby Fabrics. Not to be used with any online classes or video tutorials other than the official Shabby Fabrics tutorial. All designs, photographs, and images are protected by federal copyright law. All rights reserved.





French knot

