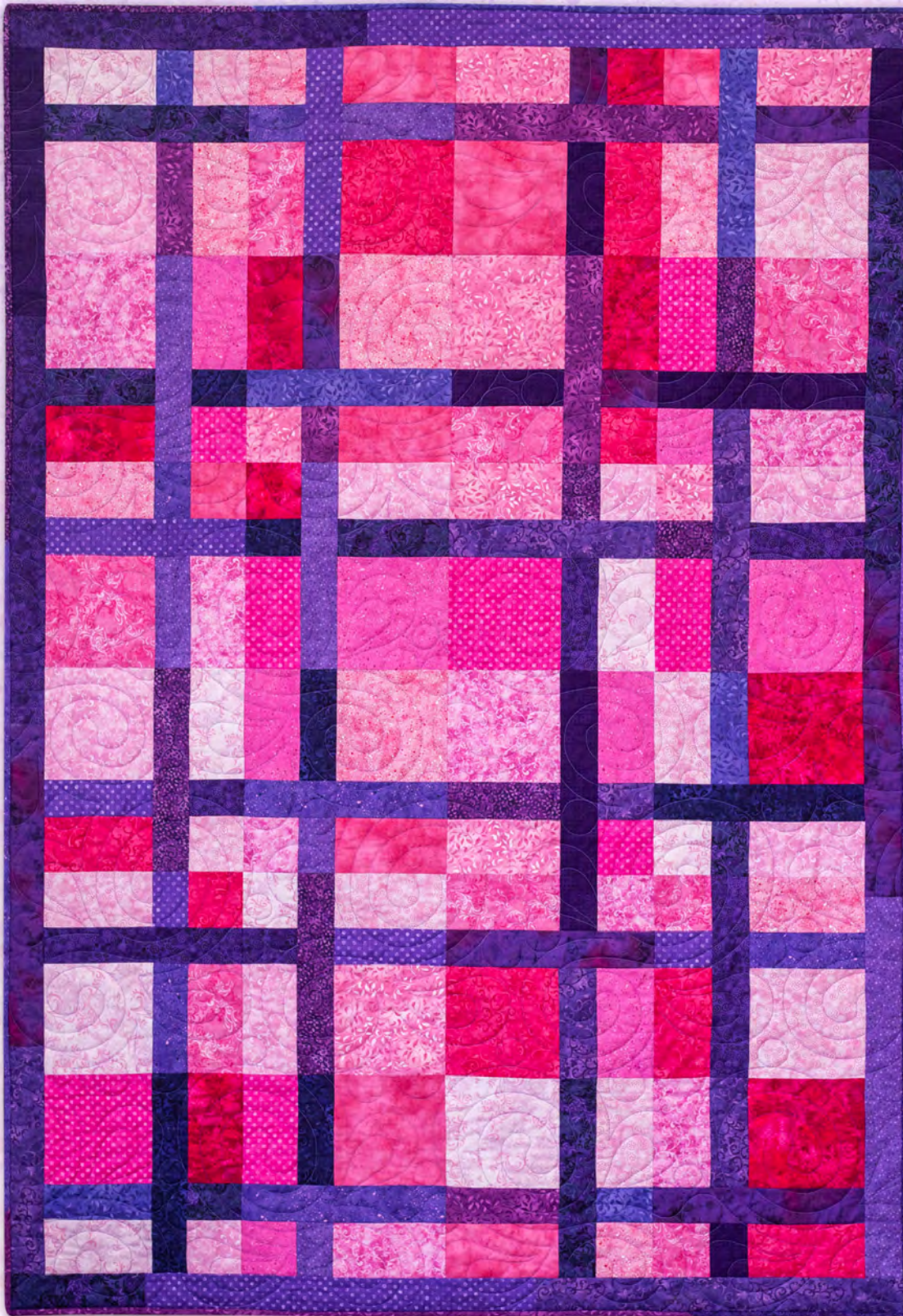


Plaid Sash-ay

Featuring 10 Karat Mini-Gems
& Essential Gems Packs



Quilt: 48" x 70"

Requires:

- 1 - 10 Karat Mini Gems
 - 1 - Essential Gems
(Includes most binding)
 - 1 - Fat Quarter*
(for remaining binding)
- Backing: 3 1/4 yds.**



WilmingtonPrints.com

Wilmington Prints: A World of Possibilities

510-11-510 Pinking of You
802-7-802 Amethyst Royale

*Required fat quarter needs to coordinate with the strip pack.

Plaid Sashay

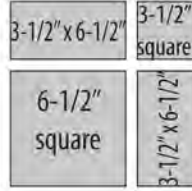
Please read all instructions carefully AND identify all fabrics before beginning.

All instructions include a 1/4" seam allowance and strips are cut selvage to selvage, unless stated otherwise.

1. Cut the following:

10 Karat Pack:

Cut each of the (24) 10" squares as shown into
 (1) 6-1/2" square,
 (2) 3-1/2" x 6-1/2" strips,
 and (1) 3-1/2" square



2-1/2" Strip Pack:

From each of 24 strips, cut (1) 2-1/2" x 11-1/2",
 (1) 2-1/2" x 6-1/2", and (1) 2-1/2" x 3-1/2"
 strips (reserve strip end)

Referring to the quilt image, select 12 of the lightest or darkest strip ends for border.
 Sew strips together end to end then cut into (2) 2-1/2" x 66-1/2" and
 (2) 2-1/2" x 48-1/2" borders

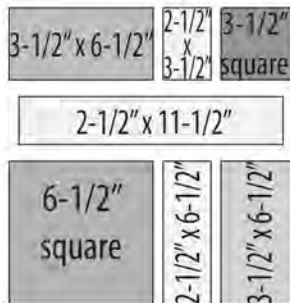
Fat Quarter:

Cut (2) 2-1/2" x 21" strips

Note: Prints in Packs may vary from color quilt image.

2. Piecing Order:

1. Fabrics are randomly selected for a scrappy look. Arrange (2) 3-1/2" x 6-1/2" strips and 1 each 6-1/2" square, 3-1/2" square, 2-1/2" x 11-1/2" strip, 2-1/2" x 6-1/2" strip, and 2-1/2" x 3-1/2" strip in 3 rows as shown. Sew into rows. Sew rows together. Make a total of 24 blocks (11-1/2" square unfinished).



Make 24 Blocks

2. Refer to Quilt Layout (Page 2) for arrangement and placement of blocks and borders.

3. Arrange blocks in 6 rows. Stitch into rows. Sew rows together into quilt center (44-1/2" x 66-1/2" unfinished).

4. Stitch 2-1/2" x 66-1/2" borders to right and left sides of quilt center. Add 2-1/2" x 48-1/2" borders to top and bottom of quilt center.

5. The quilt measures approximately 48-1/2" x 70-1/2" (unfinished). Make backing approximately 8" larger than the top.

6. Layer and baste top, batting, and backing together. Quilt as desired. Attach binding (pieced from remaining 12 strip ends and strips cut from Fat Quarter) and enjoy!!

Shading of diagrams may vary depending on fabrics used.

Plaid Sashay

QUILT LAYOUT

Border measurements are the cut size.

Shading of Quilt Layout may vary depending on fabrics used.

