

FALLING LEAVES

QUILT AND PILLOW

FABRIC REQUIREMENTS

- (1) FQ **each** of four different **reds**
- (1) FQ **each** of four different **oranges**
- (1) FQ **each** of four different **golds**
- (1) FQ **each** of four different **greens**
- (1) FQ **brown metallic** for stems
- 3½ yard **black** for **background, sashing, borders, and binding**

This pattern is for use with the
FALLING LEAVES QUILT
project featured on our YouTube channel:

 [YouTube.com/ShabbyFabrics](https://www.youtube.com/ShabbyFabrics)

Finished size: 45½" × 45½"

ASSEMBLE BLOCKS

Follow the Block Assembly instructions (on page 2) to make 4 blocks in each colorway for a total of 16 blocks.

QUILT ASSEMBLY

Arrange blocks as shown in the QUILT LAYOUT diagram (on page 3).

Separate blocks into four groups of four, with one block of each colorway in each group. In each group, sew the two top blocks together and the two bottom blocks together. Piece the two rows together to make one large four-block unit. Repeat for the remaining groups for a total of (4) large four-block units.

APPLIQUE STEMS

Using the STEM SHAPE diagram, trace the stem shape to fusible web. Follow the manufacturer's instructions for fusing the shape to your fabric. Cut out stems.

Arrange stems as shown in the QUILT LAYOUT diagram.

Iron in place, and secure with the stitch of your choice.

ADD SASHING AND BORDERS

From **black** fabric, cut:

- (2) 45" × 1½" for **sashing**
- (4) 50" × 2½" for **border**

For this step, refer to the QUILT LAYOUT diagram. Press all seams toward sashing.

Cut one **sashing** strip in half. Sew one **short sashing** strip to the bottom of Unit 1, and the other **short sashing** strip to the bottom of Unit 2, and trim to be even with the quilt. Sew Unit 3 to the bottom of Unit 1. Sew Unit 4 to the bottom of Unit 2. Sew one **long sashing** strip to the right hand side of Unit 1/3, and trim to be even with the quilt. Sew Unit 1/3 to Unit 2/4.

Add **border** to left and right side of quilt, and trim to be even with the quilt. Add **border** to the top and bottom of the quilt, and trim to be even with the quilt.

FINISH THE QUILT

Layer quilt top, batting, and backing. Quilt as desired.

From **binding** fabric, cut (5) 2½" × WOF strips. Piece so binding measures at least 190" long. Fold **binding** in half lengthwise with wrong sides together and press. Sew the binding to the front side of the quilt starting at any side. Turn the binding over and hand stitch to the back of the quilt.

This diagram is for use with the
FALLING LEAVES QUILT
 project featured on our YouTube channel:

 [YouTube.com/ShabbyFabrics](https://www.youtube.com/ShabbyFabrics)

FOR EACH BLOCK

From **leaf fabric**, cut:

(4) $2\frac{7}{8}$ " \times $2\frac{7}{8}$ " squares for **leaf point Half Square Triangles (HST)**

We used 1 of each of 4 fabrics in the chosen colorway.

(8) $2\frac{1}{2}$ " \times $2\frac{1}{2}$ " squares for **inner leaf**

We used 2 of each of 4 fabrics in the chosen colorway.

From **black fabric**, cut:

(1) $4\frac{1}{2}$ " \times $4\frac{1}{2}$ " square for **stem background**

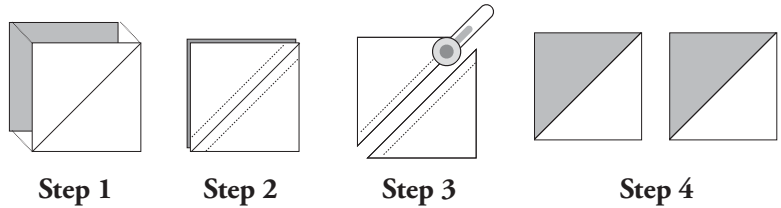
(4) $2\frac{7}{8}$ " \times $2\frac{7}{8}$ " squares for **leaf point HST**

(2) $2\frac{1}{2}$ " \times $4\frac{1}{2}$ " rectangles for **two side rectangles**

(1) $2\frac{1}{2}$ " \times $2\frac{1}{2}$ " square for **small corner**

HALF SQUARE TRIANGLES

Step 1: Place two $2\frac{7}{8}$ " \times $2\frac{7}{8}$ " squares RST with the lighter fabric on the top. Draw a line from one corner diagonally to the other corner. **Step 2:** Sew $\frac{1}{4}$ " on either side of the drawn line. **Step 3:** Cut on the drawn line. **Step 4:** Open and press seam toward the darker fabric. You will now have two pieces.



BLOCK ASSEMBLY

Referring to diagram below, arrange pieces in desired layout.

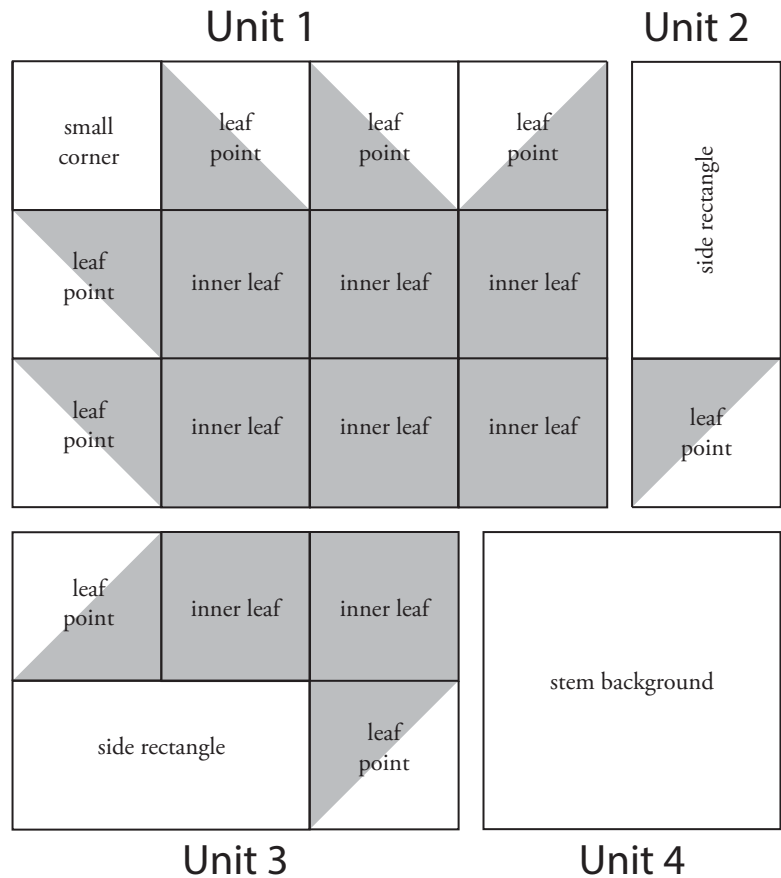
Piece the rows in Unit 1, pressing seams in alternating directions. Sew Rows 1, 2, and 3 together.

Join the two pieces in Unit 2. Sew Unit 1 and Unit 2 together, pressing seam open.

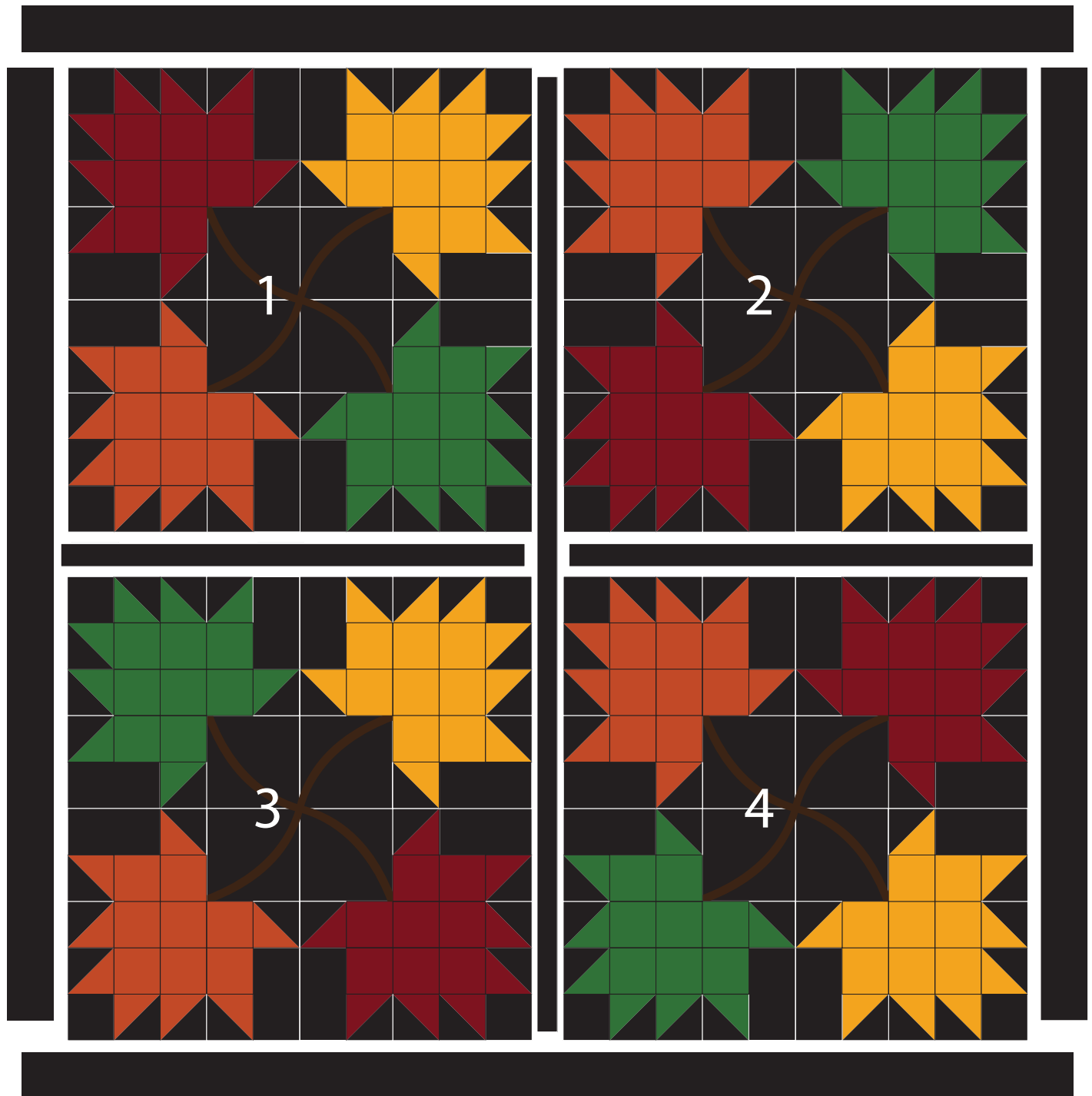
Piece the two rows in Unit 3. Sew Unit 3 to the Unit 4 square, pressing seam open.

Sew Unit 1/2 to Unit 3/4, pressing seam open.

Repeat for a total of 16 blocks.



QUILT LAYOUT



This diagram is for use with the
FALLING LEAVES QUILT
project featured on our YouTube channel:

 [YouTube.com/ShabbyFabrics](https://www.youtube.com/ShabbyFabrics)

STEM SHAPE

This diagram is for use with the
FALLING LEAVES QUILT

project featured on our YouTube channel:



[YouTube.com/ShabbyFabrics](https://www.youtube.com/ShabbyFabrics)

Reversed for Fusible
Applique

COORDINATING PILLOW

Repeat steps labeled "For Each Block" (on page 2) to create one 4-leaf block.

To make an envelope backing:

From **black fabric**, cut:

(1) 14" × WOF strip for **pillow backing**

Sub-cut into two pieces, each measuring 14" × 20½"

Fold the 14" end of one backing piece under ½" and press. Fold under another ½" and topstitch to secure. Repeat for the other backing piece.

Place pillow front on your work surface, right side up. Lay the backing pieces on top of the pillow front, right sides together. Align outer edges with the outer edges of the pillow front. The back pieces will overlap each other in the center.

Pin and sew around all four sides. Turn right side out and press. Insert 20" × 20" pillow form.

Enjoy your finished pillow!