

STARS OF VICTORY

Finishes to 59½" × 71½"

PLEASE NOTE

All seam allowances are ¼" HST = Half Square Triangle WOF = Width of Fabric

REQUIRED MATERIALS

- ½ yard blue 1 for squares
- ½ yard blue 2 for squares
- 1⅛ yard blue 3 for squares and **binding**
- 1⅓ yard cream for squares
- ⅔ yard tan for HST
- ¾ yard red for HST and **inner border**
- 1⅞ yards for **outer border**
- 3¾ yards for **backing**

RECOMMENDED MATERIALS

- FriXion® pen
- 3" Star Singles
- Olfa® Spinning Mat
- Creative Grids® 4½" × 8½" Ruler

All available at ShabbyFabrics.com

CUT FABRICS

From **blue 1**, cut:

- (40) 3½" × 3½" squares

From **blue 2**, cut:

- (4) 3½" × WOF strips

From **blue 3**, cut:

- (4) 3½" × WOF strips
- (7) 2½" × WOF strips for **binding**

From **cream**, cut:

- (8) 3½" × WOF strips
- (40) 3½" × 3½" squares

From **tan**, cut:

- (40) 3⅞" × 3⅞" squares
- OR- if using *Star Singles*, (10) 8" × 8" squares

From **red**, cut:

- (40) 3⅞" × 3⅞" squares
- OR- if using *Star Singles*, (10) 8" × 8" squares
- (6) 1½" × WOF strips for **inner border**

From **outer border** fabric, cut:

- (4) 65" × 5" strips DOWN THE LENGTH OF FABRIC for **outer border**

Follow along with the
**HOW TO MAKE A ROAD TO
OKLAHOMA QUILT BLOCK**
video featured on our YouTube channel:



[YouTube.com/Shabby Fabrics](https://www.youtube.com/ShabbyFabrics)

STARS OF VICTORY meets the standards of excellence of the Quilts of Valor® Foundation. Visit their website, govf.org, for information on how to present this quilt to a service member.

Kits
are available
while supplies last
at ShabbyFabrics.com

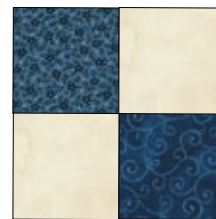
MAKE (40) 4-PATCH UNITS



Referring to diagram (*left*) sew one **blue 2** strip to one **cream** strip, pressing seam toward blue. Make four strip sets with blue 2, and four strip sets with blue 3. Cut each strip set into $3\frac{1}{2}$ " sections to make (40) **blue 2/cream** units and (40) **blue 3/cream** units.

Referring to diagram (*right*) sew (1) blue 2/cream unit to (1) blue 3/cream unit to form a 4-Patch unit. Press seams toward blues, spinning seams in center of unit (*as seen in video*).

Continue to make a total of (40) 4-Patch units. Each 4-Patch unit should measure $6\frac{1}{2}$ " \times $6\frac{1}{2}$ ".

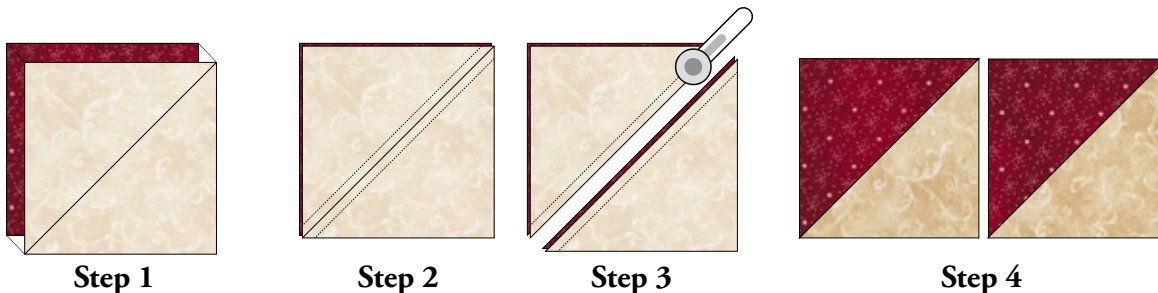


MAKE (80) HALF-SQUARE TRIANGLE UNITS

The following instructions are for traditional Half-Square Triangles (HST). For this method, use the **red** and **tan** $3\frac{7}{8}$ " \times $3\frac{7}{8}$ " squares.

*If using Star Singles, use the instructions on the paper, or follow along with our YouTube tutorial: **How to Make a Road to Oklahoma Quilt Block**. For the Star Singles method, use the **red** and **tan** 8" \times 8" squares.*

Step 1: Place two $3\frac{7}{8}$ " \times $3\frac{7}{8}$ " squares RST with the cream on the top. Draw a line from one corner diagonally to the other corner. **Step 2:** Sew $\frac{1}{4}$ " on either side of the drawn line. **Step 3:** Cut on the drawn line. **Step 4:** Open and press seam toward the red. You will now have two pieces.



Continue to make a total of 80 HST units. Each HST unit should measure $3\frac{1}{2}$ " \times $3\frac{1}{2}$ ".

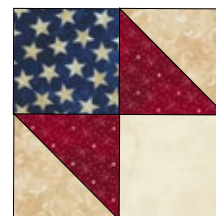
MAKE (40) HST 4-PATCH UNITS

Referring to diagram (*right*), sew one **blue 1** $3\frac{1}{2}$ " \times $3\frac{1}{2}$ " square to one **HST unit**. Press seam toward blue square.

Sew (1) **cream** $3\frac{1}{2}$ " \times $3\frac{1}{2}$ " square to (1) **HST unit**. Press seam toward cream square.

Sew (1) blue 1/HST unit to (1) cream/HST unit. Press seams toward HST, spinning seams in center of unit (*as seen in video*).

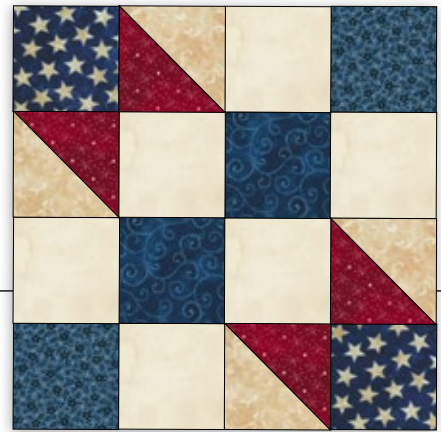
Continue to make a total of (40) HST 4-Patch units. Each unit should measure $6\frac{1}{2}$ " \times $6\frac{1}{2}$ ".



MAKE (20) ROAD TO OKLAHOMA BLOCKS

Referring to diagram (*right*), sew units together in rows, turning units as necessary. Sew rows together to make a block. Press seams open.

Continue to make a total of (20) Road to Oklahoma Blocks. Each block should measure $12\frac{1}{2}'' \times 12\frac{1}{2}''$.



ASSEMBLE QUILT

Arrange blocks as shown in diagram (*below*). Sew blocks together into rows, pressing seams as desired. Sew rows together, pressing seams as desired.

When adding borders, press all seams toward the inner border.

Piece all **inner border** strips into one continuous piece. Sew the **left and right inner borders FIRST**, then trim to be even with the quilt. Repeat for the **top and bottom inner borders**.

Sew **left and right outer borders FIRST**, then trim to be even with the quilt. Repeat for the **top and bottom outer borders**.



FINISH

Layer quilt top, batting, and backing. Quilt as desired.

Sew **binding** together into one long strip. Fold binding in half lengthwise with wrong sides together and press. Sew the binding to the front side of the quilt starting at any side. Turn the binding over and hand stitch to the back of the quilt.